

KPI 7 Equipment Availability	Number of Incidents		Explanation		Number of Incidents		Explanation	
	Quarter 1				Quarter 1			
Number of deviations between AAT equipment requested by stevedore or by shipping line and actual machinery provided (including standard of equipment, age, type and capacity)	Qube	Zero			Qube	Zero		
	Linx	Zero			Linx	Zero		
					TML	Zero		
	Quarter 2				Quarter 2			
	Qube	Zero			Qube	Zero		
	Linx	Zero			Linx	Zero		
					TML	Zero		
KPI 8 Mechanical Support	Average time lost		Explanation		Average time lost		Explanation	
	Quarter 1				Quarter 1			
Average time lost in excess of one hour due to failure of AAT in providing mechanical breakdown support, reported from the time Mechanical Engineer officially notified to the time the issue was resolved.	Qube	Zero			Qube	Zero		
	Linx	Zero			Linx	Zero		
					TML	Zero		
	Quarter 2				Quarter 2			
	Qube	Zero			Qube	5 hrs		
	Linx	Zero			Linx	Zero		
					TML	Zero		
KPI 9 Cargo dwell time over free time/long terms storage	Units/percentage		Explanation		Units/percentage		Explanation	
	Quarter 1	Services to Qube			Quarter 1	Services to Qube		
Time cargo units stay over free time, excluding Customs, DAFF and customer hold.	Services to Qube				Services to Qube			
	Total Cargo Units	59,075			Total Cargo Units	74,413		
	Units staying over free time	16,613			Units staying over free time	8,424		
	Units over free time due Customs/Daff or customer	51			Units over free time due Customs/Daff or customer	325		
	Units staying over free time excluding Customs etc. as percentage of total units	28%			Units staying over free time excluding Customs etc. as percentage of total units	11%		
	Services to Linx				Services to Linx			
	Total Cargo Units	35,372			Total Cargo Units	47,329		
	Units staying over free time	17,093			Units staying over free time	6,620		
	Units over free time due Customs/Daff or customer	39			Units over free time due Customs/Daff or customer	12		
	Units staying over free time excluding Customs etc. as percentage of total units	48%			Units staying over free time excluding Customs etc. as percentage of total units	14%		
	Services to TML				Services to TML			
	Total Cargo Units	55,089			Total Cargo Units	3,265		
	Units staying over free time	18,033			Units staying over free time	3		
	Units over free time due Customs/Daff or customer	110			Units over free time due Customs/Daff or customer	3		
	Units staying over free time excluding Customs etc. as percentage of total units	33%			Units staying over free time excluding Customs etc. as percentage of total units	0%		
	Services to Linx				Services to Linx			
	Total Cargo Units	34,004			Total Cargo Units	59,083		
	Units staying over free time	15,342			Units staying over free time	7,655		
	Units over free time due Customs/Daff or customer	169			Units over free time due Customs/Daff or customer	32		
	Units staying over free time excluding Customs etc. as percentage of total units	40%			Units staying over free time excluding Customs etc. as percentage of total units	13%		
	Services to TML				Services to TML			
	Total Cargo Units				Total Cargo Units	85,378		
	Units staying over free time				Units staying over free time	6,406		
	Units over free time due Customs/Daff or customer				Units over free time due Customs/Daff or customer	26		
	Units staying over free time excluding Customs etc. as percentage of total units				Units staying over free time excluding Customs etc. as percentage of total units	7%		
	Services to Qube				Services to Qube			
	Total Cargo Units				Total Cargo Units	12,789		
	Units staying over free time				Units staying over free time	3		
	Units over free time due Customs/Daff or customer				Units over free time due Customs/Daff or customer	2		
	Units staying over free time excluding Customs etc. as percentage of total units				Units staying over free time excluding Customs etc. as percentage of total units	0%		
KPI 10 Confidentiality and ring-fencing	Number of Complaints		Explanation		Number of Complaints		Explanation	
	Quarter 1				Quarter 1			
Number of complaints received by AAT concerning non-compliance with Clause 6 of the Undertaking	Complaints for Non-Compliance with Clause 6				Complaints for Non-Compliance with Clause 6			
	Services to Qube	Zero			Services to Qube	Zero		
	Services to Linx	Zero			Services to Linx	Zero		
	Breaches of Clause 6 Clause 6				Services to TML	Zero		
	Services to Qube	Zero			Breaches of Clause 6 Clause 6			
	Services to Linx	Zero			Services to Qube	Zero		
					Services to Linx	Zero		
					Services to TML	Zero		
Number of instance of breaches of Clause 6								

AAT's response to the complaints and/or breaches	Complaints for Non-Compliance with Clause 6			Quarter 2		
	Services to Qube	Zero		Complaints for Non-Compliance with Clause 6		
	Services to Linx	Zero		Services to Qube	Zero	
	Breaches of Clause 6 Clause 6			Services to Linx	Zero	
	Services to Qube	Zero		Services to TML	Zero	
	Services to Linx	Zero		Breaches of Clause 6 Clause 6		
				Services to Qube	Zero	
				Services to Linx	Zero	
				Services to TML	Zero	
KPI 11 Complaints		Number of Complaints	Explanation		Number of Complaints	Explanation
				Quarter 1		
	Complaints Under Price and non-Price Dispute Resolution Process			Complaints Under Price and non-Price Dispute Resolution Process		
	Services to Qube	Zero		Services to Qube	Zero	
	Services to Linx	Zero		Services to Linx	Zero	
	Details of complaint and outcome	Zero		Services to TML	Zero	
				Details of complaint and outcome	Zero	
				Quarter 2		
	Complaints Under Price and non-Price Dispute Resolution Process			Complaints Under Price and non-Price Dispute Resolution Process		
	Services to Qube	Zero		Services to Qube	Zero	
	Services to Linx	Zero		Services to Linx	Zero	
	Details of complaint and outcome	Zero		Services to TML	Zero	
				Details of complaint and outcome	Zero	

PART B: TERMINAL LAYOUT PLAN FOR EACH TERMINAL

See attachment Part B

PART C: TERMINAL USERS IN WHICH QUBE OR A QUBE RELATED ENTITY HAS AN INTEREST

See attachment Part C

AAT SEMI-ANNUAL COMPLIANCE REPORT – MELBOURNE TERMINAL

REPORT PERIOD: 1ST Jul 2023 to 31ST Dec 2023

DATE OF REPORT: 28th February 2024

1. Complaints raised either directly with AAT or under the Non-Price Dispute Resolution Process

No.	Type of Complaint	Outcome of the Complaint
NIL		

2. Breaches of Clause 6 – Confidentiality and Ring-Fencing

No.	Type of Breach	Details of Breach	Response to the Breach
NIL			

3. Access Services

Details of any circumstance in which AAT offers Access Services to Qube or any other Qube Related Entity that are more favourable than the terms offered to any other Service Provider.

NIL

4. Contractual Arrangements

Details of any offer, or any contractual arrangement between AAT and a shipping line, that involved terms that:

- (A) link or otherwise relate in any way to the shipping line using Qube or a Qube Related Entity to supply Terminal Services at Melbourne Terminal;
- (B) obliged the shipping line to engage suppliers of Terminal Services that met certain requirements that only Qube or a Qube Related Entity could satisfy;

as described in clause 5 of the Variation to the Undertaking.

NIL

Attachment A

KPI 6

Allocation of first point of rest

Fisherman Islands

Ju1 – Dec 31, 2023

JULY

NUMBER	DATE	STEVEDORE	VESSEL	VOYAGE	STARTING SHIFT	BERTH #	BERTH DELAY	LAYDOWN	MACHINERY REQUEST RECEIVED	MACHINERY REQUEST FILLED	MACHINERY ISSUES	NOTES
1	0400/2	TML	HUPEH	2305	DAY	3	NIL	J,SHED 2,F1	YES	YES	NIL	
2	1000/2	LINX	HOEGH TOKYO	107	EVE	1	NIL	C,D,WF	YES	YES	NIL	
3	2200/28	TML	BBC PACIFIC	309	MIDN	2	NIL	B	YES	YES	NIL	
4	1130/3	QP	WESTERN HIGHWAY	154	EVE	1	24HRS	A,C,D	YES	YES	NIL	
5	2000/2	QP	BBC NYHAVN	1206043	EVE	2	8HRS	B	YES	YES	NIL	
6	0200/5	QP	DON JUAN	2364	EVE	3	8HRS	E,W	YES	YES	NIL	
7	0800/6	TML	CORAL CHIEF	2311S/2313N	DAY	2	NIL	B	YES	YES	NIL	
8	1300/4	QP	BRASILIA HIGHWAY	146	EVE	1	48HRS	A,C,D,M	YES	YES	NIL	
9	0330/7	QP	GREBE ARROW	2304	EVE	3	NIL	HED1,F1,FRON	YES	YES	NIL	
10	1708/5	LINX	DREAM JASMINE	27	EVE	1	112HRS	A,C,D,M	YES	YES	NIL	
11	0500/10	LINX	OT IDEAL	26	EVE	2	NIL	B	YES	YES	NIL	
12	0600/8	QP	AAL HONG KONG	23007	EVE	3	48HRS	ED1,SHED2,F2	YES	YES	NIL	
13	1715/5	QP	COMET ACE	219	EVE	1	136HRS	A,C,D	YES	YES	NIL	
14	1930/7	LINX	TANG HONG	1	MIDN	1	120HRS	A,C,D,M	YES	YES	NIL	
15	2000/12	TML	ARKADIA	2313S/2315N	MIDN	2	NIL	B	YES	YES	NIL	
16	0600/8	QP	SWALLOW ACE	132	EVE	1	144HRS	A,C,D,M,WF	YES	YES	NIL	
17	1600/15	QP	TITANIA	EF310	MIDN	3	NIL	E,F,L	YES	YES	NIL	
18	2100/10	LINX	HOEGH COPENHAG	81	EVE	1	176HRS	A,C,D	YES	YES	NIL	
19	0800/13	QP	SUNLIGHT ACE	112	EVE	3	96HRS	E, WF	YES	YES	NIL	
20	1400/18	LINX	BBC MARMARA	10	MIDN	2	NIL	B	YES	YES	NIL	
21	0030/20	TML	HIGHLAND CHIEF	2312S/2314N	EVE	3 / 2	NIL	H,J	YES	YES	NIL	
22	1000/17	QP	WALRUS ACE	38	DAY	1	80HRS	A,C,D,M	YES	YES	NIL	
23	2130/19	QP	SOFRANA SURVILLE	288N	MIDN	2	16HRS	B	YES	YES	NIL	
24	1200/17	QP	MORNING CHERRY	2366	DAY	1	120HRS	A,C,D	YES	YES	NIL	
25	0030/20	TML	HIGHLAND CHIEF	2312S/2314N	EVE	3 / 2	56HRS	B	YES	YES	NIL	
26	1000/23	LINX	UHL FALCON	23003	MIDN	2	8HRS	F1, F2	YES	YES	NIL	
27	2330/23	TML	CHERRY POINT	2301	DAY	3	NIL	SHED2	YES	YES	NIL	
28	2000/18	LINX	FUJITRANS WORLD	318	DAY	1	144HRS	A,C,D,M,WF	YES	YES	NIL	
29	2100/25	TML	MELANESIAN CHIEF	2314S/2316N	DAY	2	NIL	B	YES	YES	NIL	
30	1830/24	QP	SEREN	230067005	DAY	3	24HRS	FRONT2, WF	YES	YES	NIL	
31	1800/26	QP	TURANDOT	2363	DAY	1	NIL	A,C,D	YES	YES	NIL	
32	1000/27	QP	BBC CITRINE	1119035	EVE	2	NIL	OLDTP, K,WF	YES	YES	NIL	
33	1300/28	LINX	ERIDANUS LEADER	60	MIDN	1	NIL	A,C,D	YES	YES	NIL	
34	1430/29	QP	TAWAKI	23/006	EVE	2	NIL	A,C	YES	YES	NIL	
35	0001/30	QP	PARSIFAL	EF311	DAY	3	NIL	E,F,L	YES	YES	NIL	
36	1030/29	QP	DREAM BEAUTY	14	MIDN	1	32HRS	D,M	YES	YES	NIL	

Legend - Berth # and Laydown

	Primary
	Secondary
	Tertiary

SUMMARY	LINX	QUBE	TML	COMMENT
TOTAL VESSELS FOR MONTH				
GREEN BERTH (Primary)	9	19	8	
ORANGE BERTH (Secondary)	0	0	0	
RED BERTH (Tertiary)	0	0	0	
GREEN LAYDOWN (Primary)	3	11	7	
ORANGE LAYDOWN (Secondary)	6	8	1	
RED LAYDOWN (Tertiary)	0	0	0	
NUMBER OF BERTHING DELAYS	5	13	2	
NUMBER OF MACHINERY ISSUES/REQUESTS NOT MET	0	0	0	

AUGUST

NUMB ER	DATE	STEVE- DORE	VESSEL	VOYAGE	STARTING SHIFT	BERTH #	BERTH DELAY	LAYDOWN	MACHINERY REQUEST RECEIVED	MACHINERY REQUEST FILLED	MACHINERY ISSUES	NOTES
1	2300/30	TML	BBC OCEAN	212	DAY	2	8HRS	B	YES	YES	NIL	
2	0945/31	LINX	PHILIPPOS		EVE	3	NIL	UNHOOK	YES	YES	NIL	
3	01/2200	QP	ORCA ACE	41	DAY	1	NIL	A,C,M	YES	YES	NIL	
4	01/2359	TML	CORAL CHIEF	2313S/2315N	DAY	2	NIL	B	YES	YES	NIL	
5	0048/31	QP	SOFRANA TOURVILL	266N	DAY	2	72HRS	B	YES	YES	NIL	
6	0810/31	LINX	OT IDEAAL	27	DAY	3	72HRS	B	YES	YES	NIL	
7	03/2100	QP	TORTUGAS	EE309	DAY	1	NIL	A,C	YES	YES	NIL	
8	06/1300	QP	PAGANELLA	2367	MIDN	1	NIL	A,M	YES	YES	NIL	
9	06/1000	QP	CHIPOL TAIAN		MIDN	3	NIL	NHOOK, FRON	YES	YES	NIL	
10	07/0500	QP	NORTHERN HIGHWA	142	EVE	1	16HRS	A,C,D	YES	YES	NIL	
11	09/1200	LINX	DIAMANTGRACHT	2306	MIDN	3	NIL	F1	YES	YES	NIL	
12	09/2330	QP	GLOBAL HIGHWAY	58	EVE	1	8HRS	A	YES	YES	NIL	
13	10/0600	LINX	CANOPUS LEADER	185	EVE	1	24HRS	A,C,D,M	YES	YES	NIL	
14	07/1800	QP	STAR JAPAN	2305	EVE	3	88HRS	J, SHED2	YES	YES	NIL	
15	11/1200	TML	ARKADIA	2315S/2317N	DAY	2	32HRS	B	YES	YES	NIL	
16	13/1030	LINX	MUNTGRACHT	2310	DAY	1	24HRS	FRONT2	YES	YES	NIL	
17	09/0600	LINX	SEA FORCE / MDT18	2308	DAY	2	120HRS	B	YES	YES	NIL	
18	13/0100	QP	ARC COMMITMENT	EF312	DAY	1	24HRS	E,F2,M	YES	YES	NIL	
19	14/1200	LINX	BBC MARMARA	11	MIDN	2	8HRS	B	YES	YES	NIL	
20	13/0600	QP	GRAND PIONEER	1	DAY	1	72HRS	A,C,D	YES	YES	NIL	
21	17/2000	LINX	OT IDEAAL	28	DAY	2	NIL	B	YES	YES	NIL	
22	14/2330	QP	OPAL ACE	98	EVE	1	80HRS	A,C	YES	YES	NIL	
23	16/1600	QP	GLOVIS CARAVEL	108	DAY	1	56HRS	A,D	YES	YES	NIL	
24	15/2245	QP	AAL PARIS	23004	DAY	3	72HRS	F2,SHED1,SHED	YES	YES	NIL	
25	18/0830	TML	BBC OCEAN	213	MIDN	2	32HRS	B	YES	YES	NIL	
26	18/1030	LINX	TRANS LEADER	57	DAY	1	56HRS	A,C,D,M	YES	YES	NIL	
27	19/0200	TML	HIGHLAND CHIEF	2314S/2316N	DAY	2	48HRS	B	YES	YES	NIL	
28	16/0345	LINX	JUMEIRAH BEACH	87	EVE	3	144HRS	SHED1,SHED2,	YES	YES	NIL	
29	18/2300	QP	MORNING PEACE	EE311	MIDN	1	104HRS	A,C	YES	YES	NIL	
30	22/0230	QP	SOFRANA SURVILLE	289N	DAY	2	48HRS	B	YES	YES	NIL	
31	20/2330	QP	AMBER ARROW	144	DAY	3	64HRS	E	YES	YES	NIL	
32	21/0230	QP	BBC CHALLENGER	1219037	MIDN	3	88HRS	AWN, K	YES	YES	NIL	
33	20/0300	LINX	MONZA	6S	DAY	1	112HRS	A,C	YES	YES	NIL	
34	24/1030	TML	MELANESIAN CHIEF	2316S/2318N	MIDN	2	40HRS	B	YES	YES	NIL	
35	21/0600	QP	DUGONG ACE	39	DAY	1	112HRS	A,D,M	YES	YES	NIL	
36	21/2300	QP	TURANDOT	2368	DAY	3	144HRS	E,L	YES	YES	NIL	
37	28/0700	LINX	DYNAMOGRACHT	2306	EVE	2	NIL	F1	YES	YES	NIL	
38	22/1200	LINX	HOEGH SEOUL	128	DAY	1	160HRS	A,C,D,M	YES	YES	NIL	
39	29/1200	QP	VENUS SPIRIT	70	MIDN	3	NIL	E	YES	YES	NIL	
40	30/1130	TML	CORAL CHIEF	2315S/2317N	EVE	2	NIL	B	YES	YES	NIL	

Legend - Berth # and Laydown

	Primary
	Secondary
	Tertiary

SUMMARY	LINX	QUBE	TML	COMMENT
TOTAL VESSELS FOR MONTH				
GREEN BERTH (Primary)	13	20	7	
ORANGE BERTH (Secondary)	0	0	0	
RED BERTH (Tertiary)	0	0	0	
GREEN LAYDOWN (Primary)	9	12	7	
ORANGE LAYDOWN (Secondary)	4	8	0	
RED LAYDOWN (Tertiary)	0	0	0	
NUMBER OF BERTHING DELAYS	9	15	5	
NUMBER OF MACHINERY ISSUES/REQUESTS NOT MET	0	0	0	

SEPTEMBER

NUMB ER	DATE	STEVE-D ORE	VESSEL	VOYAGE	STARTING SHIFT	BERTH #	BERTH DELAY	LAYDOWN	MACHINERY REQUEST RECEIVED	MACHINERY REQUEST FILLED	MACHINERY ISSUES	NOTES
1	29/1700	QP	CHIPOL DONGHAI	47	EVE	3	16HRS	NHOOK, FRONT1,	YES	YES	NIL	
2	23/1300	QP	VIKING QUEEN	1	EVE	1	184HRS	A,D,M	YES	YES	NIL	
3	31/0500	TML	NORFOLK	003W/004E	DAY	2	NIL	B	YES	YES	NIL	
4	25/1030	LINX	SELENE LEADER	55	EVE	1	240HRS	C	YES	YES	NIL	
5	25/2300	QP	JASPER ARROW	127	EVE	1	224HRS	A,C	YES	YES	NIL	
6	30/1200	QP	POLARIS HIGHWAY	73	EVE	3	136HRS	E	YES	YES	NIL	
7	26/0300	LINX	GRANDE NEW JERSEY		DAY	1	264HRS	A,C,D	YES	YES	NIL	
8	01/1200	QP	KITE ARROW	2304	DAY	3	104HRS	J, SHED2	YES	YES	NIL	
9	06/1045	TML	ARKADIA	2317S/2319N	EVE	2	NIL	B	YES	YES	NIL	
10	01/0730	LINX	HOEGH LONDON	106	DAY	1	136HRS	A,C,D,M	YES	YES	NIL	
11	02/1200	QP	NABUCCO	EF313	EVE	3	112HRS	E	YES	YES	NIL	
12	07/2300	LINX	OT IDEAAL	29	DAY	2	NIL	B	YES	YES	NIL	
13	05/0700	QP	THEBEN	EF314	DAY	3	88HRS	E	YES	YES	NIL	
14	06/1700	QP	LAULEA	8	DAY	3	80HRS	F2, SHED1, SHED2	YES	YES	NIL	
15	10/0400	LINX	BBC MARMARA	12	EVE	2	NIL	B	YES	YES	NIL	
16	06/1800	QP	BBC REGALIA	1274027	DAY	3	104HRS	HED1, SHED2, AW	YES	YES	NIL	
17	07/0930	QP	MORNING CRYSTAL	2365	EVE	1	96HRS	A,C,	YES	YES	NIL	
18	10/0800	TML	BBC OCEAN	214	DAY	2	40HRS	B	YES	YES	NIL	
19	06/0130	QP	DON JUAN	2369	EVE	3	152HRS	E	YES	YES	NIL	
20	08/0600	QP	CARNATION ACE	86	MIDN	1	104HRS	A,C	YES	YES	NIL	
21	10/2042	QP	PLOVER ARROW	2305	DAY	3	48HRS	SHED2,AWN,F2	YES	YES	NIL	
22	09/1600	LINX	VENUS LEADER	53	EVE	1	88HRS	A,C,D	YES	YES	NIL	
23	11/1930	QP	SOFRANA TOURVILLE	267N	MIDN	2	40HRS	B	YES	YES	NIL	
24	12/2200	LINX	CANOPUS LEADER	186	EVE	1	56HRS	A,C	YES	YES	NIL	
25	10/2150	QP	GENIUS HIGHWAY	68	DAY	3	120HRS	E	YES	YES	NIL	
26	13/0730	QP	BBC WISCONSIN	2024	MIDN	2	80HRS	B	YES	YES	NIL	
27	11/1012	TML	TUNSIN	2306	MIDN	3	152HRS	SHED1	YES	YES	NIL	
28	15/1000	TML	HIGHLAND CHIEF	2316S/2318N	DAY	2	64HRS	B	YES	YES	NIL	
29	12/2230	LINX	MERCURY LEADER	57	EVE	1	128HRS	A,C,D	YES	YES	NIL	
30	15/1830	QP	AAL HONG KONG	23009	DAY	3	80HRS	ED1,SHED2,J,OLD	YES	YES	NIL	
31	13-Sep	QP	HAMBURG HIGHWAY	58	EVE	1	NIL	A,C,D,M	YES	YES	NIL	
32	14/0840	LINX	HOEGH CHIBA	70	MIDN	1	128HRS	C,M	YES	YES	NIL	
33	15/2100	QP	TONSBERG	EF315	DAY	3	120HRS	E	YES	YES	NIL	
34	21/1100	TML	MELANESIAN CHIEF	2318S/2320N	MIDN	2	NIL	B	YES	YES	NIL	
35	17/0630	LINX	SAGA ADVENTURE	62SZ	DAY	3	112HRS	F2, SHED1, SHED2	YES	YES	NIL	
36	16/0530	QP	BERGAMOT ACE	131	DAY	1	168HRS	A,C,D	YES	YES	NIL	
37	19/0600	LINX	CL LINDY	232344	EVE	3	112HRS	UNHOOK	YES	YES	NIL	
38	17/0226	LINX	HOEGH ASIA	168	EVE	1	192HRS	A,C,D	YES	YES	NIL	
39	17/1030	QP	HEROIC ACE	142	MIDN	1	224HRS	A,C,D,M	YES	YES	NIL	
40	27/0100	TML	CORAL CHIEF	2317S/2319N	DAY	2	NIL	B	YES	YES	NIL	
41	17/1100	QP	MERCURY ACE	96	MIDN	1	240HRS	A,C,D,M	YES	YES	NIL	
42	26/1600	TML	EMERALD ENTERPRISE	2301	DAY	3	32HRS	J, SHED2	YES	YES	NIL	
43	19/0300	QP	MORNING CHERRY	2312	EVE	1	240HRS	A	YES	YES	NIL	

Legend - Berth # and Laydown

	Primary
	Secondary
	Tertiary

SUMMARY

TOTAL VESSELS FOR MONTH

	12	23	8	
	0	0	0	
	0	0	0	

	LINX	QUBE	TML	COMMENT
TOTAL VESSELS FOR MONTH	12	23	8	
GREEN BERTH (Primary)	0	0	0	
ORANGE BERTH (Secondary)	0	0	0	
RED BERTH (Tertiary)	0	0	0	

SEPTEMBER

<i>GREEN LAYDOWN (Primary)</i>	7	19	8	
<i>ORANGE LAYDOWN (Secondary)</i>	5	4	0	
<i>RED LAYDOWN (Tertiary)</i>	0	0	0	
<i>NUMBER OF BERTHING DELAYS</i>	10	22	4	
NUMBER OF MACHINERY ISSUES/REQUESTS NOT MET	0	0	0	

OCTOBER

NUMB ER	DATE	STEVE-D ORE	VESSEL	VOYAGE	STARTING SHIF T	BERTH #	BERTH DELAY	LAYDOWN	MACHINERY REQUEST RECEIVED	MACHINERY REQUEST FILLED	MACHINERY ISSUES	NOTES
1	22/1600	LINX	GRANDE BALTIMORA	GBL423	EVE	1	176HRS	A,M				
2	29/0330	QP	CHIPOL TAIAN	HF28	DAY	3	24HRS	REEFER				
3	29/2300	TML	BBC OCEAN	215	MIDN	2	16HRS	B				
4	23/2200	QP	AMBER ARROW	145	DAY	1	192HRS	A,C,D,M				
5	30/1300	LINX	OT IDEAAAL	30	MIDN	2	32HRS	B				
6	03/0500	QP	THALATTA	EF316	EVE	3	NIL	E				
7	02/0600	LINX	MAYUREE NAREE	2	EVE	3	40HRS	FRONT2, J				
8	24/1100	QP	TRAVIATA	EE313	DAY	1	232HRS	A,C				
9	24/1800	LINX	DREAM JASMINE	28	MIDN	1	264HRS	A				
10	07/0400	TML	ARKADIA	2319S/2321N	DAY	2	NIL	B				
12	30/1418	LINX	GREEN LAKE	85	EVE	1	160HRS	A,C,M				
13	07/0800	LINX	BBC MARMARA	13	MIDN	2	24HRS	B				
14	05/2330	LINX	GOLIATH LEADER	110	DAY	1	72HRS	A,C,D				
15	07/1500	QP	JASPER ARROW	128	DAY	1	32HRS	E,F2				
16	09/1300	LINX	MUNTGRACHT	2312	MIDN	3	NIL	FRONT2				
17	09/2200	QP	BBC EMSLAND	1212042	DAY	3	NIL	B				
18	08/0100	LINX	HOEGH TROTTER	38	DAY	1	72HRS	A,C,D				
19	10/1200*	TML	HIGHLAND CHIEF	2318S/2320N	EVE	2	NIL	B				
20	11//2300	TML	HOIHOW	2307	MIDN	3	16HRS	SHED2				
21	09/1600	QP	TURANDOT	2372	EVE	1	88HRS	C,D,M,L				
22	09/2200	QP	BBC EMSLAND	1212042	DAY	3	24HRS	B				
23	07/2100	QP	GRAND MERCURY	1	DAY	1	152HRS	A,C,M				
24	13/0330	QP	AAL SHANGHAI	23008	MIDN	3	40HRS	SHED1, F1, OLDTP				
25	15/1000	QP	CHARLIE		EVE	3	NIL	UNHOOK				
26	06/2000	QP	VIKING DIAMOND	54	EVE	3	NIL	E,L				
27	07/1000	QP	MORNING CRYSTAL	2371	EVE	1	240HRS	C,D				
28	14/1930	LINX	ARCH RAPHAEL	2322229	EVE	3	48HRS	UNHOOK				
29	10//2200	LINX	TRANS FUTURE 7	146	EVE	1	200HRS	A,C				
30	16/0918	QP	MANDARIN ARROW	2305	EVE	3	72HRS	SHED2, J				
31	19/2359	TML	BBC OCEAN	216	MIDN	2	NIL	B				
32	16/0830	LINX	POSITIVE LEADER	114	MIDN	1	96HRS	A,C,D,M				
33	20/0400	TML	MELANESIAN CHIEF	2320S/ 2322 N	EVE	2	32HRS	B				
34	16/1600	QP	GALA	2	EVE	3	112HRS	F2				
35	18/1700	QP	GRAND HERO	7	DAY	1	80HRS	OLD D, M				
36	20/1400*	TML	NORFOLK	004W/005E	DAY	2	NIL	B				
37	20/1100	QP	IGUAZU HIGHWAY	48	EVE	1	72HRS	A,B,C,M				
38	22/2100	LINX	OT IDEAAAL	31	DAY	2	NIL	B				
39	22/2200	QP	SALOME	EZ302	EVE	3	8HRS	E, OLDTP				
40	23/1800	LINX	MUNTGRACHT	2313	EVE	3	16HRS	FRONT2				
41	20/1750	QP	VIKING CORAL	49	DAY	1	104HRS	A,C,M				
42	25/1330	TML	CORAL CHIEF	2319S/2321N	MIDN	2	NIL	B				
43	19/0530	QP	GLOVIS CARAVEL	109	DAY	1	184HRS	A, OLD D, M				
44	24/1130	QP	FIDELIO	EF317	DAY	3	56HRS	E,F,SHED1				
45	24/1400	LINX	TRANS FUTURE 6	146	EVE	1	88HRS	A,C,D				
46	25/2300	QP	MORNING LENA	EE315	DAY	1	96HRS	A,C,D				
47	29/0500	QP	CLIPPER ALEXANDRIA	31	MIDN	3	8HRS	FRONT2, J				
48	28/0600	LINX	HOEGH TRAPPER	41	DAY	1	64HRS	A,C				

OCTOBER

Legend - Berth # and Laydown

- Primary
- Secondary
- Tertiary

SUMMARY	LINX	QUBE	TML	COMMENT
<i>TOTAL VESSELS FOR MONTH</i>				
<i>GREEN BERTH (Primary)</i>	16	23	8	
<i>ORANGE BERTH (Secondary)</i>	0	0	0	
<i>RED BERTH (Tertiary)</i>	0	0	0	
<i>GREEN LAYDOWN (Primary)</i>	10	15	8	
<i>ORANGE LAYDOWN (Secondary)</i>	6	8	0	
<i>RED LAYDOWN (Tertiary)</i>	0	0	0	
<i>NUMBER OF BERTHING DELAYS</i>	14	19	3	
NUMBER OF MACHINERY ISSUES/REQUESTS NOT MET	0	0	0	

NOVEMBER

NUMBER	DATE	STEVEDORE	VESSEL	VOYAGE	STARTING SHIFT	BERTH #	BERTH DELAY	LAYDOWN	MACHINERY REQUEST RECEIVED	MACHINERY REQUEST FILLED	MACHINERY ISSUES	NOTES
1	31/2330	QP	MORNING CELLO	2373	DAY	1	24HRS	A,C,D,M	YES	YES	NIL	
2	30/1030	LINX	MAASGRACHT	2310	DAY	3	40HRS	F1	YES	YES	NIL	
3	01/1600	TML	ARKADIA	2321S/2323N	MIDN	2	NIL	B, OLDTP	YES	YES	NIL	
4	20/1100	QP	IGUAZU HIGHWAY	48	DAY	1	NIL	A,C,D	YES	YES	NIL	
5	31/0700	TML	YANGTZE CLASSIC	2307	EVE	3	48HRS	SHED1, F2	YES	YES	NIL	
6	02/0600	LINX	BBC MARMARA	14	MIDN	2	8HRS	B	YES	YES	NIL	
7	29/1200	LINX	GRANDE NEW JERSI	GNJ623	EVE	1	112HRS	A	YES	YES	NIL	
8	03/1230	QP	DOVER HIGHWAY	103	EVE	1	16HRS	C,D,M	YES	YES	NIL	
9	03/1130	LINX	GREAT VANGUARD	2308	MIDN	2	24HRS	B,G,J,SHED1	YES	YES	NIL	
10	05/0900	LINX	HOEGH KOBE	80	DAY	1	16HRS	C,M	YES	YES	NIL	
11	06/0400	QP	TIRRANNA	EF318	DAY	1	16HRS	B,C, OLD D	YES	YES	NIL	
12	08/0900	TML	HIGHLAND CHIEF	2320S/2322N	EVE	2	NIL	B	YES	YES	NIL	
13	07/0200	QP	SWALLOW ACE	135	DAY	1	48HRS	A,C	YES	YES	NIL	
14	07/2100	TML	BBC OCEAN	217	EVE	2	32HRS	B	YES	YES	NIL	
15	08/1100	LINX	DREAM JASMINE	29	MIDN	1	32HRS	A	YES	YES	NIL	
16	08/2000	QP	STAR JAVA	2306	EVE	3	32HRS	D2, AWN,G,FRONT	YES	YES	NIL	
17	09/1430	QP	NORTHERN HIGHWAY	145	DAY	1	40HRS	A,C	YES	YES	NIL	
18	09/0900	LINX	OT IDEAAL	32	DAY	3	40HRS	B	YES	YES	NIL	
19	12/0100	QP	ORCA ACE	43	DAY	1	NIL	D	YES	YES	NIL	
20	11/2230	QP	JASPER ARROW	129	EVE	1	24HRS	A,C,D	YES	YES	NIL	
21	12/1930	QP	PACIFIC ENDEAVOUR	2310W/2311E	DAY	2	NIL	B,SHED1,OLDTP	YES	YES	NIL	
22	09/2035	LINX	MERWEDEGRACHT	2309	DAY	2	96HRS	OTP	YES	YES	NIL	
23	15/0500	TML	MELANESIAN CHIEF	2322S/2324N	EVE	2	NIL	B	YES	YES	NIL	
24	11/0430	QP	JACOB OLDENDORF	232379	EVE	3	24HRS	UNHOOK	YES	YES	NIL	
25	15/2330	LINX	CAPRICORNUS LEAF	59	DAY	1	NIL	A,C,OLD D	YES	YES	NIL	
26	16/0200	QP	AAL BANGKOK	23009	MIDN	2	NIL	OLD D	YES	YES	NIL	
27	14/1200	QP	AAL KEMBLA	23006	MIDN	2	72HRS	B, F1,F2,SHED1	YES	YES	NIL	
28	11/0830	QP	CASPIAN HARMONY	10	MIDN	3	152HRS	B,J,SHED2	YES	YES	NIL	
29	15/2200	LINX	DREAM DIVA	6	EVE	1	48HRS	A,D	YES	YES	NIL	
30	19/0700	QP	MORNING PILOT	EE317	EVE	1	NIL	A,C,D	YES	YES	NIL	
31	18/1130	QP	DON JUAN	2374	DAY	1	32HRS	A,C,M	YES	YES	NIL	
32	15/0930	TML	KEN TOKU	2301	DAY	3	152HRS	SHED1,FRONT2	YES	YES	NIL	
33	18/0630	QP	TUGELA	EF319	MIDN	1	104HRS	D	YES	YES	NIL	
34	18/1245	QP	BBC EMSLAND	2042	MIDN	2	NIL	B	YES	YES	NIL	
35	23/1030	TML	CORAL CHIEF	2321S/2323N	EVE	2	NIL	B	YES	YES	NIL	
36	20/0500	QP	SWIFT ACE	128	MIDN	GB	88HRS	A,C	YES	YES	NIL	
37	20/0430	LINX	HOEGH TOKYO	109	DAY	1	96HRS	A,C	YES	YES	NIL	
38	15/2300	LINX	SAGA PIONEER	54SZ	DAY	3	192HRS	SHED 2	YES	YES	NIL	
39	21/0230	LINX	TRANS FUTURE 5	150	DAY	1	96HRS	A,C	YES	YES	NIL	
40	22/0345	QP	WALRUS ACE	40	DAY	1	96HRS	D,L,M	YES	YES	NIL	
41	19/0530	QP	ATLAS WIND	V010E	EVE	3	168HRS	B	YES	YES	NIL	
42	26/1430	TML	BBC OCEAN	218	MIDN	2	NIL	B	YES	YES	NIL	
43	24/0500	QP	SOUTHERN HIGHWAY	122	EVE	1	72HRS	A,C,D,M	YES	YES	NIL	
44	28/1200	LINX	BBC MARMARA	15	MIDN	2	NIL	B, OLDTP	YES	YES	NIL	
45	25/1230	QP	IRIS ACE	79	EVE	1	72HRS	C,D	YES	YES	NIL	

Legend - Berth # and Laydown

	Primary
	Secondary
	Tertiary

SUMMARY	LINX	QUBE	TML	COMMENT
TOTAL VESSELS FOR MONTH				
<i>GREEN BERTH (Primary)</i>	13	20	8	
<i>ORANGE BERTH (Secondary)</i>	1	3	0	
<i>RED BERTH (Tertiary)</i>	0	0	0	
<i>GREEN LAYDOWN (Primary)</i>	12	11	8	
<i>ORANGE LAYDOWN (Secondary)</i>	2	12	0	
<i>RED LAYDOWN (Tertiary)</i>	0	0	0	
NUMBER OF BERTHING DELAYS	12	17	3	
NUMBER OF MACHINERY ISSUES/REQUESTS NOT MET	0	0	0	

DECEMBER

NUMB ER	DATE	STEVE-D ORE	VESSEL	VOYAGE	STARTING SHIF T	BERTH #	BERTH DELAY	LAYDOWN	MACHINERY REQUEST RECEIVED	MACHINERY REQUEST FILLED	MACHINERY ISSUES	NOTES
1	28/2200	LINX	OT IDEAAL	33	EVE	2	32HRS	B	YES	YES	NIL	
2	30/1100	LINX	GRAND QUEST	23GQ05	MIDN	3	NIL	E	YES	YES	NIL	
3	01/0600	QP	PLOVER ARROW	2307	EVE	3	NIL	SHED1	YES	YES	NIL	
4	02/0130	TML	YANGTZE FLOURISH	2308	DAY	2	NIL	OLDTP, F2	YES	YES	NIL	
5	01/1830	LINX	PHILIPPOS	2324901	EVE	3	NIL	UNHOOK	YES	YES	NIL	
6	04/0800	TML	ARKADIA	2323S/2325N	EVE	2	NIL	B	YES	YES	NIL	
7	04/1700	QP	AMBER ARROW	146	DAY	1	8HRS	A	YES	YES	NIL	
8	05/0400	LINX	ALTAIR LEADER	86	DAY	1	24HRS	C	YES	YES	NIL	
9	06/0700	QP	BBC NAPLES	45050	EVE	2	NIL	NHOOK,FRONT	YES	YES	NIL	
10	05/1430	LINX	TRANS FUTURE 7	148	EVE	3	16HRS	E	YES	YES	NIL	
11	03/1500	QP	GLOVIS CAPTAIN	5	DAY	1	NIL	A,C,D	YES	YES	NIL	
12	07/0800	QP	KITE ARROW	2306	EVE	3	NIL	RONT2,H,J,SHE	YES	YES	NIL	
13	7/0930	QP	BELUGA ACE	48	DAY	1	16HRS	D	YES	YES	NIL	
14	08/0830	TML	HIGHLAND CHIEF	2322S/2324N	EVE	2	NIL	B,OLDTP	YES	YES	NIL	
15	07/1200	LINX	HOEGH JEDDAH	59	MIDN	1	24HRS	C,D,M	YES	YES	NIL	
16	07/2100	QP	CAPE TOWN HIGHWAY	108	EVE	3	8HRS	E,H,M,W	YES	YES	NIL	
17	12-Dec	TML	NORFOLK	006E	DAY	2	NIL	B	YES	YES	NIL	
18	12/0900	QP	VIKING PAGLIA	2375	EVE	1	NIL	A,WF	YES	YES	NIL	
19	13/0600	QP	TULANE	EF320	EVE	3	NIL	ED2, F1,F2,OLD	YES	YES	NIL	
20	14/0700	TML	MELANESIAN CHIEF	2324S/2326N	EVE	2	NIL	B	YES	YES	NIL	
21	15/0001	QP	MORNING CELESTA	EE319	DAY	1	NIL	A,C	YES	YES	NIL	
22	15/1600	TML	BBC OCEAN	219	MIDN	2	NIL	B	YES	YES	NIL	
23	15/0400	QP	GLOVIS CLIPPER	1	DAY	3	24HRS	A,C	YES	YES	NIL	
24	16/1500	QP	PACIFIC ENDEAVOUR	2311W/2312E	MIDN	2	NIL	B,SHED1	YES	YES	NIL	
25	17/2000	QP	MORNING CRYSTAL	2376	MIDN	3	NIL	IED1,OLDTP W	YES	YES	NIL	
26	12/0830	LINX	DELPHINUS LEADER	45	DAY	1	NIL	C,D,M	YES	YES	NIL	
27	18-Dec	LINX	OT IDEAAL	34	DAY	2	NIL	B	YES	YES	NIL	
28	17/1600	QP	OPALO	66	MIDN	3	24HRS	WN,FRONT2,F1	YES	YES	NIL	
29	18/2200	QP	DOVER HIGHWAY	104	DAY	1	NIL	A,C,M	YES	YES	NIL	
30	16/1900	LINX	CRUX LEADER	1	EVE	1	NIL	A,C,D	YES	YES	NIL	
31	18/1930	QP	BERGAMOT ACE	133	MIDN	2	40HRS	C,D,M	YES	YES	NIL	
32	13/1900	QP	SHANGHAI HIGHWAY	169	EVE	1	120HRS	A,C,OLD D, WF	YES	YES	NIL	
33	17/1600	QP	LYDDEN	25	EVE	1	128HRS	B,C	YES	YES	NIL	
34	23/1600	TML	CORAL CHIEF	2323S/2325N	MIDN	2	NIL	B,OLDTP	YES	YES	NIL	
35	25/0500	QP	AAL GEELONG	23006	DAY	3	NIL	UNHOOK	YES	YES	NIL	
36	03/1200	QP	GRAND AURORA	0001A	DAY	1	NIL	A,C,D	YES	YES	NIL	
37	19/1500	LINX	GRANDE NEW JERSEY		EVE	1	232HRS	A,C,M	YES	YES	NIL	
38	28/0200	LINX	ADV RELIANT	15	DAY	2	NIL	F1	YES	YES	NIL	
39	28/2359	TML	ARKADIA	2325S/2402N	DAY	2	NIL	B	YES	YES	NIL	
40	26/0100	QP	SOUTHERN HIGHWAY	123	EVE	1	80HRS	A,C,M	YES	YES	NIL	
41	28/1400	QP	DON JUAN	2377	DAY	1	32HRS	A,C,B	YES	YES	NIL	
42	29/1700	LINX	BBC MARMARA	16	EVE	2	116HRS	B,TPC	YES	YES	NIL	

Legend - Berth # and Laydown

- Primary
- Secondary
- Tertiary

SUMMARY	LINX	QUBE	TML	COMMENT
TOTAL VESSELS FOR MONTH				
GREEN BERTH (Primary)	12	22	8	
ORANGE BERTH (Secondary)	0	0	0	
RED BERTH (Tertiary)	0	0	0	
GREEN LAYDOWN (Primary)	8	12	8	
ORANGE LAYDOWN (Secondary)	4	10	0	

DECEMBER

<i>RED LAYDOWN (Tertiary)</i>	0	0	0	
<i>NUMBER OF BERTHING DELAYS</i>	6	10	0	
NUMBER OF MACHINERY ISSUES/REQUESTS NOT MET	0	0	0	

Attachment A

KPI 6

Allocation of first point of rest

Port Kembla

Jul 1to Dec 31, 2023

NUMBER	DATE	STEVE-DORE	VESSEL	VOYAGE	STARTING SHIFT	BERTH #	BERTH DELAY	LAYDOWN	MACHINERY REQUEST RECEIVED	MACHINERY REQUEST FILLED	MACHINERY ISSUES	NOTES
1	1/07/2023	QUBE	KOTA BAHAGIA	2306W	NIGHT	106	N	M BLOCK AND GSHED	Y	Y		
2	1/07/2023	QUBE	RCC EUROPE	1	DAY	105	Y	H BLOCK, F BLOCK, D BLOCK, B BLOCK AND R BLOCK	Y	Y		VESSEL BERTHED AT 105 DUE TO 106 AND 107 BEING OCCUPIED.
3	2/07/2023	QUBE	OCEAN SPLENDOUR	1	DAY	103	Y	DIRECT TO TRUCK	Y	Y		
4	3/07/2023	LINX	SEA CORAL	147	EVENING	106	N	I BLOCK, 106STRG AND P SHED	Y	Y		
5	6/07/2023	QUBE	TRANS FUTURE 7	144	NIGHT	105	Y	B BLOCK, D BLOCK, H BLOCK, N BLOCK AND PSUED	Y	Y		VESSEL BERTHED AT 105 DUE TO 106 AND 107 BEING OCCUPIED.
6	7/07/2023	LINX	GRANDE FLORIDA	223	DAY	107	Y	A BLOCK, C BLOCK AND O BLOCK	Y	Y		
7	7/07/2023	QUBE	HOUTMANGRACHT	2305	NIGHT	106	Y	DIRECT TO TRUCK	Y	Y		
8	8/07/2023	QUBE	JASA MURNI	26	DAY	105	Y	H BLOCK, F BLOCK, B BLOCK, D BLOCK AND R BLOCK	Y	Y		VESSEL BERTHED AT 105 DUE TO 106 AND 107 BEING OCCUPIED.
9	10/07/2023	QUBE	THERMOPYLAE	309	NIGHT	106	Y	B BLOCK, D BLOCK, F BLOCK, H BLOCK, L BLOCK, M BLOCK, PSUED AND N BLOCK	Y	Y		B BLOCK UTILISED AS NOT EONOUGH SPACE IN A OR C BLOCKS
11	10/07/2023	LINX	HOEGH DETROIT	112	NIGHT	107	Y	EBLK1, 107CON, 107STR, A BLOCK, B BLOCK, C BLOCK, O BLOCK, Q BLOCK AND ESHED	Y	Y		
10	11/07/2023	QUBE	AETOS	23114	DAY	103	Y	DIRECT TO TRUCK	Y	Y		
12	11/07/2023	QUBE	HUPEH	2305	EVENING	106	Y	L BLOCK AND P SHED	Y	Y		
13	13/07/2023	LINX	THRUXTON	1	DAY	105	Y	H BLOCK, F BLOCK, D BLOCK, R BLOCK AND N BLOCK	Y	Y		VESSEL BERTHED AT 105 DUE TO 106 AND 107 BEING OCCUPIED.
14	15/07/2023	QUBE	THEMIS	308	NIGHT	107	Y	EBLK1, 107CON, 107STR, A BLOCK, B BLOCK, C BLOCK, O BLOCK, D BLOCK, ESHED AND LINKSPAN	Y	Y		B BLOCK AND D BLOCK UTILISED AS NOT EONOUGH SPACE IN A OR C BLOCKS
15	18/07/2023	QUBE	BBC RHONETAL	1302020	NIGHT	103	N	DIRECT TO TRUCK	Y	Y		
16	18/07/2023	QUBE	DON JUAN	V2364	EVENING	107	Y	EBLK1, 107CON, A BLOCK, B BLOCK, C BLOCK, Q BLOCK, O BLOCK, D BLOCK AND ESHED	Y	Y		B BLOCK AND D BLOCK UTILISED AS NOT EONOUGH SPACE IN A OR C BLOCKS
17	19/07/2023	QUBE	DUGONG ACE	39	NIGHT	105	Y	B BLOCK, D BLOCK, F BLOCK, H BLOCK AND N BLOCK	Y	Y		VESSEL BERTHED AT 105 DUE TO 106 AND 107 BEING OCCUPIED.
18	20/07/2023	QUBE	GENIUS HIGHWAY	67	EVENING	107	Y	EBLK1, 107CON 107STR, A BLOCK, B BLOCK, C BLOCK, Q BLOCK, O BLOCK, D BLOCK, H BLOCK AND ESHED	Y	Y		B BLOCK, D BLOCK AND H BLOCKS UTILISED AS NOT EONOUGH SPACE IN A OR C BLOCKS
19	21/07/2023	LINX	POWAN	V230	NIGHT	106	Y	K BLOCK AND G SHED	Y	Y		
20	21/07/2023	QUBE	DREAM ANGEL	35	EVENING	105	Y	D BLOCK, F BLOCK, H BLOCK AND N BLOCK	Y	Y		VESSEL BERTHED AT 105 DUE TO 106 AND 107 BEING OCCUPIED.
21	22/07/2023	QUBE	SEA PROTEUS	723	DAY	103	N	DIRECT TO TRUCK	Y	Y		
22	22/07/2023	QUBE	TURANDOT	V2363	EVENING	107	Y	EBLK1, 107CON, A BLOCK, B BLOCK, C BLOCK, Q BLOCK, O BLOCK, D BLOCK, E SHED AND LINKSPAN	Y	Y		B BLOCK AND D BLOCK UTILISED AS NOT EONOUGH SPACE IN A OR C BLOCKS
23	25/07/2023	QUBE	MORNING CRYSTAL	V2365	DAY	107	Y	A BLOCK, C BLOCK, Q BLOCK, B BLOCK AND E SHED	Y	Y		B BLOCK UTILISED AS NOT EONOUGH SPACE IN A OR C BLOCKS
24	26/07/2023	QUBE	GLOBAL GREEN	2	DAY	103	Y	DIRECT TO TRUCK	Y	Y		
25	26/07/2023	QUBE	POLARIS HIGHWAY	72	DAY	105	Y	H BLOCK, F BLOCK, D BLOCK, B BLOCK, C BLOCK, N BLOCK, P SHED AND L BLOCK	Y	Y		VESSEL BERTHED AT 105 DUE TO 106 AND 107 BEING OCCUPIED. C BLOCK UTILISED AS NOT ENOUGH SPACE IN H, F, D OR B BLOCKS.
26	27/07/2023	QUBE	IGUAZU HIGHWAY	46	DAY	107	Y	EBLK1, GBLK1, 107CON, Q BLOCK AND ESHED	Y	Y		
27	27/07/2023	QUBE	CHERRY POINT	2301	EVENING	106	N	L BLOCK AND G SHED	Y	Y		
28	29/07/2023	QUBE	KOTA BAHAGIA	2307W	DAY	106	N	L BLOCK AND P SHED	Y	Y		
29	29/07/2023	LINX	GRAND QUEST	23GQ002	EVENING	105	Y	B BLOCK, D BLOCK, F BLOCK AND H BLOCK	Y	Y		VESSEL BERTHED AT 105 DUE TO 106 AND 107 BEING OCCUPIED.

Legend - Berth # and Laydown
 Primary
 Secondary
 Tertiary

SUMMARY	LINX	QUBE
TOTAL VESSELS FOR MONTH	6	23
GREEN BERTH	4	17
ORANGE BERTH	2	6
RED BERTH	0	0
GREEN LAYDOWN	5	18
ORANGE LAYDOWN	1	5
RED LAYDOWN	0	0

NUMBER OF BERTHING DELAYS 5 18
NUMBER OF MACHINERY ISSUES/REQUESTS NOT MET

SEE ATTACHED SHEETS SHOWING BERTH AND CONGESTION DELAYS

VESSEL ETA'S									
NAME	ETA DATE	ETA TI	POB	ETD	BERTH	BSD - TREA	PREVIOUS	VOLUME	WINDOW
GRANDE FLORIDA (2)	15/06/2023	18:12	7/07/2023 6:22	9/07/2023 18:09	107			1790	
VIRGO LEADER	16/06/2023	19:00	28/06/2023 17:17	1/07/2023 7:53	105			2026	
ARTEMIS LEADER	17/06/2023	16:00	30/06/2023 16:45	7/07/2023 4:01	107			3807	
GENAVA (2)	19/06/2023	23:06	28/06/2023 14:51	2/07/2023 0:17	103				
RCC EUROPE	23/06/2023	22:00	1/07/2023 10:00	6/07/2023 3:59	105			2901	
PACIFIC ISLAND (1)	25/06/2023	9:00	25/06/2023 13:48	28/06/2023 13:25	103				
TRANS FUTURE 7	25/06/2023	15:18	6/07/2023 3:59	8/07/2023 1:08	105			1605	
OCEAN SPLENDOUR	27/06/2023	16:00	2/07/2023 2:25	11/07/2023 9:58	103				
HOEGH DETROIT	29/06/2023	18:18	9/07/2023 18:09	15/07/2023 0:38	107			3468	
THERMOPYLAE	30/06/2023	11:00	9/07/2023 23:52	11/07/2023 16:01	106			740	
KOTA BAHAGIA	30/06/2023	20:00	30/06/2023 21:59	2/07/2023 3:08	106				
JASA MURNI	2/07/2023	6:48	8/07/2023 3:07	12/07/2023 23:59	105			2318	
THRUXTON	2/07/2023	8:42	13/07/2023 1:53	18/07/2023 18:02	105			2627	
SEA CORAL	3/07/2023	12:40	3/07/2023 14:01	6/07/2023 22:53	106				
HOUTMANGRACHT	3/07/2023	20:00	7/07/2023 0:48	9/07/2023 20:42	106				
THEMIS	5/07/2023	20:30	15/07/2023 2:23	18/07/2023 14:28	107			1558	
AETOS	5/07/2023	21:20	11/07/2023 11:47	15/07/2023 20:20	103				
HUPEH	7/07/2023	7:00	11/07/2023 17:51	20/07/2023 17:00	106				
DON JUAN	7/07/2023	11:18	18/07/2023 16:36	20/07/2023 8:01	107			1403	
DUGONG ACE	8/07/2023	7:30	18/07/2023 19:58	21/07/2023 18:12	105			2364	
GENIUS HIGHWAY	11/07/2023	13:30	20/07/2023 10:22	22/07/2023 11:05	107			1933	
DREAM ANGEL	12/07/2023	16:00	21/07/2023 19:56	26/07/2023 9:02	105			2375	
TURANDOT	12/07/2023	23:00	22/07/2023 13:15	25/07/2023 3:00	107			1031	
MORNING CRYSTAL	14/07/2023	6:00	25/07/2023 5:19	27/07/2023 8:06	107			1741	
IGUAZU HIGHWAY	14/07/2023	6:45	27/07/2023 12:10	2/08/2023 0:03	107			2180	
POLARIS HIGHWAY	15/07/2023	7:00	26/07/2023 10:50	29/07/2023 18:02	105			3619	
GRAND QUEST	16/07/2023	7:00	29/07/2023 19:54	1/08/2023 1:55	105			660	
SUNRISE ACE	17/07/2023	8:45	1/08/2023 1:36	5/08/2023	106			2708	
BBC RHONETAL	17/07/2023	22:00	17/07/2023 22:54	20/07/2023 3:57	103				
POWAN	18/07/2023	15:00	20/07/2023 19:15	27/07/2023 15:22	106				
SEA PROTEUS	21/07/2023	18:00	22/07/23 05:32	26/07/2023 0:07	103				
GLOBAL GREEN	24/07/2023	9:00	26/07/2023 2:27	2/08/2023 19:12	103				

GRIMALDI PRIORITISING GRANDE HOUSTON OVER FLORIDA

30,000T WHEAT - QUATTRO PRIORITISED THE PACIFIC ISLAND

12,000T KOCH FERTILISER

1st PORT OF CALL

35,000T CLINKER

CAN ONLY BERTH AT 107 DUE TO LOA

FIRST PORT OF CALL

MACHINERY

MACHINERY

9,000T UREA

11,500T STEEL

KLINE PRIORITISING POLARIS HIGHWAY

EXPORT CRANE PARTS

EXPORT BSL

55,000T WHEAT

38,500T CLINKER

VESSEL	VOYAGE	STARTING SHIFT	BERTH #	BERTH DELAY	LAYDOWN	MACHINERY REQUEST RECEIVED	MACHINERY REQUEST FILLED	MACHINERY ISSUES	NOTES
SUNRISE ACE	118	NIGHT	105	Y	H BLOCK, R BLOCK, F BLOCK, D BLOCK, H BLOCK, N BLOCK, 105STRG AND PSHED	Y	Y		VESSEL BERTHED AT 105 DUE TO 106 AND 107 BEING OCCUPIED.
SUNLIGHT ACE	112	NIGHT	106	Y	A BLOCK, C BLOCK, B BLOCK, F BLOCK, H BLOCK, M BLOCK, PSHED AND N BLOCK	Y	Y		A BLOCK AND C BLOCK UTILISED AS NOT ENOUGH SPACE IN B, D, F, H BLOCKS
MORNING CHERRY	V2366	DAY	107	Y	107CON, A BLOCK, O BLOCK AND ESHED	Y	Y		
PILECKI	7	DAY	107	Y	I BLOCK, 107STRG AND GBLK1	Y	Y		
HOEGH JACKSONVILLE	56	DAY	106	Y	B BLOCK, D BLOCK, F BLOCK, H BLOCK, ESHED, L BLOCK AND P SHED	Y	Y		
TRANS FUTURE 3	282	EVENING	105	Y	A BLOCK, B BLOCK, C BLOCK, Q BLOCK AND O BLOCK	Y	Y		A BLOCK, C BLOCK, Q BLOCK AND O BLOCK UTILISED AS NOT ENOUGH SPACE IN B, D, F, H BLOCKS
GLOVIS CENTURY	2	NIGHT	105	Y	H BLOCK, R BLOCK, F BLOCK, D BLOCK AND N BLOCK	Y	Y		VESSEL BERTHED AT 105 DUE TO 106 AND 107 BEING OCCUPIED.
PARSIFAL	EF311	NIGHT	107	Y	EBLK1, 107CON, C BLOCK, O BLOCK, Q BLOCK AND ESHED	Y	Y		
GRAND HERO	6	EVENING	106	N	B BLOCK, D BLOCK, F BLOCK AND R BLOCK	Y	Y		H BLOCK NOT UTILISED AS NOT ENOUGH SPACE
FEDERAL KUDOS	2304	EVENING	103	N	DIRECT TO TRUCK	Y	Y		
FIGARO	EE310	EVENING	107	Y	EBLK1, GBLK1, 107CON 107STRG, A BLOCK, B BLOCK, C BLOCK, O BLOCK, Q BLOCK AND ESHED	Y	Y		
GLOVIS COUNTESS	33	DAY	105	Y	B BLOCK, C BLOCK, N BLOCK, D BLOCK, F BLOCK, H BLOCK AND M BLOCK	Y	Y		C BLOCK UTILISED AS NOT ENOUGH SPACE IN B, D, F, H BLOCKS
TRANS FUTURE 5	148	DAY	107	Y	EBLK1, 107CON, A BLOCK, B BLOCK, C BLOCK, O BLOCK, Q BLOCK AND ESHED	Y	Y		B BLOCK, UTILISED AS NOT ENOUGH SPACE IN A, C, O AND Q BLOCKS
SPRING BREEZE	5	NIGHT	103	Y	DIRECT TO TRUCK	Y	Y		
AMBER ARROW	144	NIGHT	106	Y	L BLOCK, M BLOCK, R BLOCK, H BLOCK, D BLOCK, C BLOCK AND A BLOCK	Y	Y		A BLOCK AND C BLOCK UTILISED AS NOT ENOUGH SPACE IN B, D, F, H BLOCKS
HOEGH TRACER	44	DAY	107	Y	Q BLOCK, O BLOCK, A BLOCK, C BLOCK, GBLK1 AND E SHED	Y	Y		
SPLENDID ACE	155	DAY	105	Y	H BLOCK, F BLOCK, B BLOCK, D BLOCK AND 105STRG	Y	Y		VESSEL BERTHED AT 105 DUE TO 106 AND 107 BEING OCCUPIED.
KYOWA ORCHID	123	DAY	106	N	L BLOCK	Y	Y		
DREAM ORCHID	45	DAY	106	Y	A BLOCK, C BLOCK, Q BLOCK AND L BLOCK	Y	Y		A BLOCK, C BLOCK, Q BLOCK AND O BLOCK UTILISED AS NOT ENOUGH SPACE IN B, D, F, H BLOCKS
OPAL ACE	98	DAY	107	Y	GBLK1, I BLOCK, J BLOCK, K BLOCK, A BLOCK, B BLOCK, C BLOCK, O BLOCK, Q BLOCK, D BLOCK, F BLOCK, H BLOCK, E SHED AND G SHED	Y	Y		B BLOCK, D BLOCK, F BLOCK AND H BLOCK UTILISED AS NOT ENOUGH SPACE IN A, C, O AND Q BLOCKS
GLOVIS CARAVEL	43	EVENING	105	Y	H BLOCK, F BLOCK, D BLOCK AND B BLOCK	Y	Y		VESSEL BERTHED AT 105 DUE TO 106 AND 107 BEING OCCUPIED.
HOEGH LONDON	106	DAY	107	Y	C BLOCK AND EBLK1	Y	Y		
KOTA BAHAGIA	2308W	NIGHT	106	N	L BLOCK AND GEARSTORE	Y	Y		
LAKE GENEVA	21	NIGHT	106	Y	H BLOCK, F BLOCK, D BLOCK, B BLOCK, L BLOCK AND PSHED	Y	Y		
DREAM ANGEL	36	DAY	105	Y	C BLOCK, A BLOCK, 105 STRG AND N BLOCK	Y	Y		VESSEL BERTHED AT 105 DUE TO 106 AND 107 BEING OCCUPIED.
DUGONG ACE	39	DAY	107	Y	107CON, A BLOCK, C BLOCK, OBLOCK, Q BLOCK AND ESHED	Y	Y		

wn

SUMMARY	LINX	QUBE	
TOTAL VESSELS FOR MONTH	4	22	
GREEN BERTH	4	15	
ORANGE BERTH	0	7	
RED BERTH	0	0	
GREEN LAYDOWN	3	14	
ORANGE LAYDOWN	0	5	
RED LAYDOWN	1	3	
NUMBER OF BERTHING DELAYS	4	18	SEE ATTACHED SHEETS SHOWING BERTH AND CONGESTION DELAYS
NUMBER OF MACHINERY ISSUES/REQUESTS NOT MET			

VESSEL ETA'S									
NAME	ETA DATE	ETA TIME	POB	ETD	BERTH	BSD - TREATMENT	PREVIOUS PORT	VOLUME	WINDOW
SUNRISE ACE	17/07/2023	8:45	1/08/2023 1:36	05/08/23 00:07	106			2708	
SUNLIGHT ACE	25/07/2023	8:00	1/08/2023 3:40	7/08/2023 21:05	105			2514	
MORNING CHERRY	25/07/2023	9:06	2/08/2023 1:52	4/08/2023 1:07	107			909	
TRANS FUTURE 3	26/07/2023	12:25	7/08/2023 6:45	9/08/2023 2:01	107			1621	
HOEGH JACKSONVILLE	26/07/2023	19:00	5/08/2023 2:37	9/08/2023 13:30	106			2401	
CHERRY POINT	27/07/2023	4:30	27/07/2023 17:13	29/07/2023 4:05	106				STEEL
KOTA BAHAGIA	27/07/2023	19:00	29/07/2023 6:00	31/07/2023 23:44	106				
PARSIFAL	1/08/2023	8:36	9/08/2023 4:24	10/08/2023 15:33	107			960	
PILECKI	2/08/2023	4:00	4/08/2023 3:04	7/08/2023 6:04	107				NIF TRAINS
FIGARO	4/08/2023	18:00	10/08/2023 17:31	12/08/2023 11:00	107			1802	
GLOVIS CENTURY	6/08/2023	9:00	7/08/2023 23:30	11/08/2023 8:03	105			2338	
GRAND HERO	9/08/2023	12:00	9/08/2023 17:02	13/08/2023 8:03	106			1939	
GLOVIS COUNTESS	10/08/2023	6:00	11/08/2023 10:00	18/08/2023 10:00	105			2545	
FEDERAL KUDOS	10/08/2023	12:00	10/08/2023 15:03	12/08/2023 21:47	103				7,000T UREA
TRANS FUTURE 5	11/08/2023	12:30	12/08/2023 13:03	16/08/2023 8:16	107			3147	AAT PRIORITISED DUE TO PDI BRI
SPRING BREEZE	12/08/2023	11:00	14/08/2023 4:10	17/08/2023 23:57	103				35,000T WHEAT
AMBER ARROW	12/08/2023	11:00	13/08/2023 10:15	19/08/2023 8:30	106			2180	
HOEGH TRACER	13/08/2023	8:48	16/08/2023 9:00	23/08/2023 5:14	107			3557	
SPLENDID ACE	14/08/2023	23:45	18/08/2023 12:11	25/08/2023 11:54	105			3505	
DREAM ORCHID	17/08/2023	16:06	20/08/2023 9:22	24/08/2023 22:04	106			947	
KYOWA ORCHID	19/08/2023	7:00	19/08/2023 17:11	20/08/2023 6:58	106				DISCHARGE 1 X BOAT/LOAD MILI'
OPAL ACE	20/08/2023	8:15	23/08/2023 7:22	27/08/2023 8:04	107			2937	
GLOVIS CARAVEL	21/08/2023	1:30	25/08/2023 13:52	29/08/2023 23:05	105			2049	
LAKE GENEVA	22/08/2023	1:30	30/08/2023 6:02	1/09/2023 8:47	106			2644	
HOEGH LONDON	23/08/2023	11:14	27/08/2023 10:11	30/08/2023 8:03	107			1056	AAT PRIORITISED DUE TO PDI BRI
KOTA BAHAGIA	27/08/2023	am	27/08/2023 17:58	30/08/2023 4:19	106				
DREAM ANGEL	28/08/2023	7:48	30/08/2023 0:38	2/09/2023 6:04	105			1718	
DUGONG ACE	28/08/2023	14:00	30/08/2023 9:58	3/09/2023 5:03	107			2332	

PAK UP

TARY CARG

PAK UP

9	9/09/2023	LINX	HOEGH CHIBA	70	NIGHT	105	Y	B BLOCK,D BLOCK,F BLOCK,H BLOCK, ESHED, PSBED AND N BLOCK	Y	Y	
10	9/09/2023	QUBE	AAL HONG KONG	23009	EVENING	106	N	RAIL SIDING	Y	Y	
11	10/09/2023	QUBE	OCEAN SPLENDOR	45	EVENING	103	Y	DIRECT TO TRUCK	Y	Y	
12	11/09/2023	QUBE	NABUCCO	EF313	EVENING	107	Y	EBKL1, 107CON,A BLOCK,B BLOCK,C BLOCK AND ESHD	Y	Y	
13	12/09/2023	LINX	GRANDE NEW JERSEY	623	DAY	106	Y	R BLOCK, H BLOCK AND F BLOCK	Y	Y	
14	13/09/2023	QUBE	TRANS FUTURE 7	145	NIGHT	105	Y	B BLOCK,N BLOCK AND GEARSTORE	Y	Y	B BLOCK, UTILISED AS NOT ENOUGH SPACE IN H BLOCK
15	13/09/2023	LINX	HOEGH ASIA	168	DAY	107	Y	GBLK1,A BLOCK,C BLOCK,O BLOCK, D BLOCK AND E SHED	Y	Y	D BLOCK, UTILISED AS NOT ENOUGH SPACE IN A,C,O AND Q BLOCKS
16	14/09/2023	QUBE	LAULEA	8	NIGHT	106	Y	L BLOCK	Y	Y	
17	14/09/2023	QUBE	NOBLE ACE	98	EVENING	105	N	R BLOCK, H BLOCK, F BLOCK, D BLOCK AND B BLOCK	Y	Y	VESSEL BERTHED AT 105 DUE TO 106 AND 107 BEING OCCUPIED.
18	15/09/2023	QUBE	DON JUAN	V2369	EVENING	106	Y	B Block,D Block,F Block,H Block,R BLOCK, M BLOCK,PSBED, G SHED, J BLOCK, K BLOCK NDD L BLOCK	Y	Y	
19	15/09/2023	QUBE	BOHEME	EE312	EVENING	107	Y	A BLOCK,B BLOCK,C BLOCK,Q BLOCK, D BLOCK,H BLOCK AND ESHED	Y	Y	B BLOCK, D BLOCK AND H BLOCK UTILISED AS NOT ENOUGH SPACE IN A,C,O AND Q BLOCKS
20	17/09/2023	QUBE	DREAM JASMINE	28	NIGHT	107	Y	A BLOCK AND C BLOCK	Y	Y	
21	19/09/2023	QUBE	CHIPOL DONGHAI	47	NIGHT	106	Y	N BLOCK	Y	Y	
22	20/09/2023	QUBE	ALCOR	923	NIGHT	103	Y	DIRECT TO TRUCK	Y	Y	
23	20/09/2023	QUBE	EMERALD ENTERPRISE	2301	EVENING	106	Y	L BLOCK, I BLOCK AND G SHED	Y	Y	
24	21/09/2023	LINX	MERCURY LEADER	57	DAY	105	N	D BLOCK,F BLOCK,H BLOCK AND GEARSTORE	Y	Y	VESSEL BERTHED AT 105 DUE TO 106 AND 107 BEING OCCUPIED.
25	23/09/2023	LINX	APHRODITE LEADER	38	EVENING	107	Y	B BLOCK, C BLOCK, D BLOCK, F BLOCK, H BLOCK, E SHED AND EBLK1	Y	Y	B BLOCK, D BLOCK, F BLOCK AND H BLOCK UTILISED AS NOT ENOUGH SPACE IN A,C,O AND Q BLOCKS
26	24/09/2023	QUBE	PAGNA	23	EVENING	105	N	R BLOCK, F BLOCK, D BLOCK AND H BLOCK	Y	Y	VESSEL BERTHED AT 105 DUE TO 106 AND 107 BEING OCCUPIED.
27	26/09/2023	QUBE	MARSGRACHT	2310	DAY	106	Y	DIRECT TO TRUCK	Y	Y	
28	28/09/2023	QUBE	TONSBERG	EF313	NIGHT	107	Y	EBLK1, GBLK1, 107CON, C BLOCK AND ESHED	Y	Y	
29	29/09/2023	QUBE	POLARIS HIGHWAY	73	NIGHT	105	Y	N BLOCK	Y	Y	VESSEL BERTHED AT 105 DUE TO 106 AND 107 BEING OCCUPIED.
30	29/09/2023	QUBE	BERGAMOT ACE	131	EVENING	105	Y	B Block,D Block,F Block,H Block, P Shed and 105SRTG	Y	Y	VESSEL BERTHED AT 105 DUE TO 106 AND 107 BEING OCCUPIED.
31	29/09/2023	LINX	SAGA ADVENTURE	62SZ	EVENING	106	Y	GSHED	Y	Y	
32	30/09/2023	QUBE	TITUS	EE314	NIGHT	107	Y	107STRG,A BLOCK,C BLOCK,O BLOCK,Q BLOCK, ESHED, F BLOCK, H BLOCK, I BLOCK, J BLOCK AND K BLOCK	Y	Y	F BLOCK AND H BLOCK UTILISED AS NOT ENOUGH SPACE FOR MAFI'S IN GENERAL CARGO AREAS

Legend - Berth # and Laydown

Primary
Secondary
Tertiary

SUMMARY	LINX	QUBE
TOTAL VESSELS FOR MONTH	9	23
GREEN BERTH	6	17
ORANGE BERTH	3	6
RED BERTH	0	0
GREEN LAYDOWN	7	20
ORANGE LAYDOWN	2	3
RED LAYDOWN	0	0

NUMBER OF BERTHING DELAYS	6	18	SEE ATTACHED SHEETS SHOWING BERTH AND CONGESTION DELAYS
NUMBER OF MACHINERY ISSUES/REQUESTS NOT MET			

VESSEL ETA'S									
NAME	ETA DATE	ETA TIME	POB	ETD	BERTH	BSD - TREATMENT	PREVIOUS PORT	VOLUME	WINDOW
TURANDOT	30/08/2023	5:00	1/09/2023 9:30	4/09/2023 16:00	106			1250	
VENUS SPIRIT	31/08/2023	21:40	2/09/2023 8:06	6/09/2023 16:29	105			2880	
INASA	2/09/2023	21:05	2/09/2023 22:39	4/09/2023 18:02	103				4,658T UREA
GRAND QUEST	2/09/2023	23:00	3/09/2023 6:58	5/09/2023 16:56	107			703	
SELENE LEADER	5/09/2023	1:00	5/09/2023 3:06	8/09/2023 1:57	106			1856	
SILVER QUEEN	5/09/2023	20:30	5/09/2023 21:42	9/09/2023 20:00	107			3100	1st Port of Call
GENIUS HIGHWAY	6/09/2023	6:00	8/09/2023 4:07	9/09/2023 8:11	106			1388	
CHIPOL DONGHAI	7/09/2023	9:00	7/09/2023 10:45	8/09/2023 16:12	105				PLATE - 1620.528T - Cf
HOEGH CHIBA	7/09/2023	13:00	8/09/2023 18:59	12/09/2023 15:54	105			1492	
GRANDE NEW JERSEY	8/09/2023	9:06	12/09/2023 6:34	14/09/2023 2:28	106			1678	
AAL HONG KONG	9/09/2023	5:30	9/09/2023 10:18	12/09/2023 4:00	106				TRAINS
OCEAN SPLENDOR	10/09/2023	5:00	11/09/2023 6:13	18/09/2023 0:02	103				38,500T CLINKER
NABUCCO	10/09/2023	8:10	11/09/2023 16:28	13/09/2023 1:44	107			697	
HOEGH ASIA	10/09/2023	13:22	13/09/2023 4:16	15/09/2023 15:53	107			2106	
TRANS FUTURE 7	11/09/2023	0:30	12/09/2023 18:12	14/09/2023 6:53	105			823	
BOHEME	12/09/2023	22:30	15/09/2023 18:13	17/09/2023 0:40	107			1688	
LAULEA	13/09/2023	5:36	14/09/2023 6:28	15/09/2023 12:06	106				MACHINES
DON JUAN	14/09/2023	8:42	15/09/2023 14:38	18/09/2023 23:35	106			1305	
NOBLE ACE	14/09/2023	15:30	14/09/2023 16:38	21/09/2023 1:59	105			2428	1st Port of Call - FUMI
DREAM JASMINE	14/09/2023	23:59	17/09/2023 2:27	23/09/2023 7:58	107			2151	
CHIPOL DONGHAI	7/09/2023	9:00	19/09/2023 1:52	20/09/2023 9:19	106				PLATE - 1620.528T - Cf
EMERALD ENTERPRISE	15/09/2023	15:30	20/09/2023 11:30	24/09/2023 18:35	106				CHINA STEEL
APHRODITE LEADER	18/09/2023	17:30	23/09/2023 10:54	27/09/2023 22:09	107			3805	1st Port of Call
ALCOR	19/09/2023	20:00	20/09/2023 6:04	29/09/2023 16:57	103				70,000T WHEAT
TUNSIN	20/09/2023	8:30	24/09/2023 20:21	26/09/2023 0:02	106				CHINA STEEL
MERCURY LEADER	21/09/2023	9:00	21/09/2023 8:47	23/09/2023 0:59	105			1078	
TONSBERG	23/09/2023	6:20	28/09/2023 0:05	29/09/2023 18:27	107			456	
PAGNA	24/09/2023	16:00	24/09/2023 17:18	29/09/2023 0:02	105			1551	
POLARIS HIGHWAY	25/09/2023	13:20	29/09/2023 2:01	29/09/2023 12:14	105			174	
MARSGRACHT	25/09/2023	23:00	26/09/2023 8:48	29/09/2023 6:10	106				PARRAMATTA POWER
SAGA ADVENTURE	25/09/2023	20:30	29/09/2023 11:08	1/10/2023 13:03	106				8,200T PULP
BERGAMOT ACE	26/09/2023	6:00	29/09/2023 14:05	30/09/2023 23:27	105			1156	
TITUS	27/09/2023	8:00	29/09/2023 20:45	1/10/2023 19:02	107			1485	

NUMBER	DATE	STEVE-DORE	VESSEL	VOYAGE	STARTING SHIFT	BERTH #	BERTH DELAY	LAYDOWN	MACHINERY REQUEST RECEIVED	MACHINERY REQUEST FILLED	MACHINERY ISSUES	NOTES
1	3/10/2023	QUBE	DOVER HIGHWAY	102	NIGHT	105	Y	B BLOCK, D BLOCK, F BLOCK, H BLOCK AND L BLOCK	Y	Y		
2	3/10/2023	LINX	HOEGH TROTTER	38	NIGHT	107	Y	A BLOCK, B BLOCK, C BLOCK, D BLOCK, F BLOCK, H BLOCK, Q BLOCK, O BLOCK, 107CON AND ESHED	Y	Y		
3	3/10/2023	QUBE	BERGE YOTEI	1	DAY	103	N	DIRECT TO TRUCK	Y	Y		
4	3/10/2023	QUBE	EIDSVAAG OMEGA	25	DAY	106	N	DIRECT TO TRUCK	Y	Y		
5	5/10/2023	QUBE	HEROIC ACE	142	EVENING	106	Y	R BLOCK, D BLOCK, F BLOCK, H BLOCK, L BLOCK AND M BLOCK	Y	Y		
6	6/10/2023	QUBE	TRANSFUTURE 5	149	NIGHT	105	Y	B BLOCK, G BLOCK AND H BLOCK	Y	Y		VESSEL BERTHED AT 105 DUE TO 106 AND 107 BEING OCCUPIED.
7	6/10/2023	QUBE	MORNING CHERRY	V2370	EVENING	107	Y	107STRG, LINKSPAN, A BLOCK AND C BLOCK	Y	Y		
8	8/10/2023	LINX	GRANDE BALTAMORA	423	NIGHT	107	Y	A BLOCK AND C BLOCK	Y	Y		
9	10/10/2023	QUBE	PACIFIC ENDEAVOUR	2301E	EVENING	106	N	L BLOCK AND PSHED	Y	Y		
10	11/10/2023	QUBE	JASPER ARROW	128	DAY	107	N	EBLK1, GBLK1, A BLOCK, C BLOCK, O BLOCK AND ESHED	Y	Y		
11	13/10/2023	QUBE	PRECIOUS ACE	92	DAY	107	N	A BLOCK, C BLOCK, O BLOCK, Q BLOCK AND GSHED	Y	Y		
12	15/10/2023	QUBE	DUGONG ACE	40	EVENING	105	N	ALCOVE, R BLOCK, D BLOCK, B BLOCK, H BLOCK, L BLOCK, N BOCK AND M BLOCK	Y	Y		VESSEL BERTHED AT 105 DUE TO 106 AND 107 BEING OCCUPIED.
13	15/10/2023	QUBE	TURANDOT	V2372	EVENING	106	Y	C BLOCK, M BLOCK AND N BLOCK	Y	Y		SPACE IN B,D,F,H BLOCKS.VESSEL BERTHED AT 105 DUE TO 106 AND 107 BEING OCCUPIED.
14	16/10/2023	LINX	HOEGH BANGKOK	77	EVENING	106	Y	A BLOCK, B BLOCK, C BLOCK, D BLOCK, F BLOCK, H BLOCK, E SHED, GSHED, I BLOCK, J BLOCK, K BLOCK AND M BLOCK	Y	Y		C BLOCK AND A BLOCK UTILISED AS NOT ENOUGH SPACE IN B,D,F,H BLOCKS
15	18/10/2023	QUBE	VIKING DIAMOND	54	EVENING	107	N	EBLK1, A BLOCK, C BLOCK, O BLOCK, Q BLOCK AND ESHED	Y	Y		
16	19/10/2023	QUBE	MORNING CRYSTAL	V2371	NIGHT	107	N	107CON, EBLK1, LINKSPAN, C BLOCK, O BLOCK, Q BLOCK AND ESHED	Y	Y		
17	22/10/2023	QUBE	TRANSFUTURE 7	146	NIGHT	107	N	107CON, A BLOCK, C BLOCK, O BLOCK, Q BLOCK AND ESHED	Y	Y		
18	23/10/2023	QUBE	CLIPPER ALEXANDRIA	31	DAY	106	N	L BLOCK	Y	Y		
19	24/10/2023	QUBE	GRAND HERO	7	DAY	105	N	B BLOCK, C BLOCK, D BLOCK, F BLOCK, H BLOCK AND N BLOCK	Y	Y		C BLOCK UTILISED AS NOT ENOUGH SPACE IN B,D,F,H BLOCKS
20	26/10/2023	QUBE	PEGASUS ACE	316	DAY	107	N	107CON, C BLOCK, O BLOCK, Q BLOCK, ESHED AND I BLOCK	Y	Y		
21	27/10/2023	QUBE	MV CHARLIE	4011	NIGHT	105	Y	M BLOCK AND N BLOCK	Y	Y		
22	27/10/2023	QUBE	SKY KNIGHT	70	DAY	103	N	DIRECT TO TRUCK	Y	Y		
23	29/10/2023	LINX	APHRODITE LEADER	39	DAY	106	N	B BLOCK, D BLOCK, F BLOCK, H BLOCK, ALCOVE AND R BLOCK	Y	Y		
24	30/10/2023	QUBE	TRANSFUTURE 6	146	EVENING	107	N	107CON, A BLOCK, C BLOCK AND Q BLOCK	Y	Y		
25									Y	Y		

Legend - Berth # and Laydown

	Primary
	Secondary
	Tertiary

TOTAL VESSELS FOR MONTH	LINX	QUBE
TOTAL VESSELS FOR MONTH	4	20
GREEN BERTH	4	16
ORANGE BERTH	0	4
RED BERTH	0	0
GREEN LAYDOWN	3	18
ORANGE LAYDOWN	0	2
RED LAYDOWN	1	0

NUMBER OF BERTHING DELAYS 3 5
NUMBER OF MACHINERY ISSUES/REQUESTS NOT MET
SEE ATTACHED SHEETS SHOWING BERTH AND CONGESTION DELAYS

VESSEL ETA'S									
NAME	ETA DATE	ETA TIME	POB	ETD	BERTH	BSD - TREATMENT	PREVIOUS PORT	VOLUME	WINDOW
DOVER HIGHWAY	27/09/2023	19:00	1/10/2023 1:52	6/10/2023 0:58	105			3377	1st Port of Call
HOEGH TROTTER	28/09/2023	10:30	1/10/2023 22:35	6/10/2023 16:10	107			2510	
HEROIC ACE	29/09/2023	9:18	6/10/2023 0:17	7/10/2023 8:07	106			1412	
MORNING CHERRY	1/10/2023	8:30	PM 6/10/2023 TBC	7/10/2023 19:57	107			1116	
BERGE YOTEI	2/10/2023	11:00	2/10/2023 13:04	7/10/2023 14:56	103				55,000T WHEAT
GRANDE BALTIMORA	2/10/2023	16:00	8/10/2023 9:09	9/10/2023 22:54	107			1227	
TRANS FUTURE 5	3/10/2023	7:15	6/10/2023 3:23	11/10/2023 13:11	105			2843	1st Port of Call
EIDSVAGG OMEGA	3/10/2023	6:00	3/10/2023 6:38	5/10/2023 20:01	106				LOAD GLUTEN
PACIFIC ENDEAVOUR	10/10/2023	15:00	10/10/2023 18:14	13/10/2023 21:58	106				TRANS TAS
JASPER ARROW	11/10/2023	9:00	11/10/2023 5:16	12/10/2023 8:10	107			1607	
PRECIOUS ACE	13/10/2023	12:00	13/10/2023 12:24	17/10/2023 19:53	107			2269	
DUGONG ACE	15/10/2023	17:00	15/10/2023 16:12	17/10/2023 2:51	105			2321	
TURANDOT	14/10/2023	23:00	15/10/2023 22:28	16/10/2023 23:20	106			943	
HOEGH BANGKOK	16/10/2023	10:00	17/10/2023 2:32	21/10/2023 6:03	106			2931	
VIKING DIAMOND	18/10/2023	20:53	18/10/2023 22:25	19/10/2023 22:00	107			1481	
MORNING CRYSTAL	19/10/2023	20:00	19/10/2023 23:59	21/10/2023 1:04	107			1169	
TRANS FUTURE 7	21/10/2023	23:00	21/10/2023 22:45	22/10/2023 23:59	107			1542	
CLIPPER ALEXANDRIA	23/10/2023	18:20	23/10/2023 19:36	27/10/2023 4:41	106				SOUTHERN STEEL BEA
GRAND HERO	24/10/2023	7:00	24/10/2023 7:59	25/10/2023 14:57	105			2802	
MV CHARLIE	25/10/2023	15:25	26/10/2023 18:28	28/10/2023 13:04	105				LOLO 7 X CRANES ON I
PEGASUS ACE	26/10/2023	6:45	26/10/2023 7:51	29/10/2023 6:57	105			2425	REQUIRES FUMIGATIC
SKY NIGHT	26/10/2023	21:30	27/10/2023 0:06	6/11/2023 6:06	103				38,500T CLINKER
APHRODITE LEADER	28/10/2023	20:00	29/10/2023 5:10	31/10/2023 21:55	106			4131	
TRANS FUTURE 6	30/10/2023	16:00	30/10/2023 17:02	1/11/2023 15:49	107			2655	

NUMBER	DATE	STEVE-DORE	VESSEL	VOYAGE	STARTING SHIFT	BERTH #	BERTH DELAY	LAYDOWN	MACHINERY REQUEST RECEIVED	MACHINERY REQUEST FILLED	MACHINERY ISSUES	NOTES
1	1/11/2023	QUBE	FIDELIO	EF317	EVENING	107	N	107CON, GBLK1, C BLOCK, O BLOCK AND GSHED	Y	Y		
2	3/11/2023	QUBE	MAASGRACHT	2310	EVENING	106	N	I BLOCK AND L BLOCK				
3	3/11/2023	QUBE	MORNING CELLO	V2373	EVENING	107	N	EBLK1, A BLOCK, B BLOCK, C BLOCK, GSHED, O BLOCK AND Q BLOCK	Y	Y		B BLOCK, UTILISED AS NOT ENOUGH SPACE IN A OR C BLOCKS
4	5/11/2023	QUBE	CAPETOWN HIGHWAY	107	DAY	107	N	GBLK1, B BLOCK, D BLOCK, F BLOCK AND GSHED	Y	Y		B BLOCK, F BLOCK AND D BLOCK UTILISED AS NOT ENOUGH SPACE IN A OR C BLOCKS
5	5/11/2023	LINX	GRANDE NEW JERSEY	623	EVENING	105	N	H BLOCK, R BLOCK AND F BLOCK	Y	Y		VESSEL BERTHED AT 105 DUE TO 106 AND 107 BEING OCCUPIED.
6	7/11/2023	QUBE	HOIHOW	2307	NIGHT	107	Y	E SHED	Y	Y		
7	9/11/2023	QUBE	WALRUS ACE	40	EVENING	107	Y	107CON, A BLOCK, B BLOCK, C BLOCK AND D BLOCK	Y	Y		B BLOCK AND D BLOCK UTILISED AS NOT ENOUGH SPACE IN A OR C BLOCKS
8	9/11/2023	QUBE	AAL KEMBLA	23006	EVENING	106	N	F BLOCK, M BLOCK AND PSBED	Y	Y		
9	11/11/2023	QUBE	DESTINY	24009	DAY	103	N	DIRECT TO TRUCK	Y	Y		
10	11/11/2023	LINX	ARTEMIS LEADER	120	DAY	107	N	EBLK1, 107CON, A BLOCK, C BLOCK, O BLOCK, Q BLOCK AND ESHED	Y	Y		
11	12/11/2023	QUBE	SALVIA ACE	152	DAY	105	N	D BLOCK, F BLOCK, H BLOCK, R BLOCK, ALCOVE AND N BLOCK	Y	Y		VESSEL BERTHED AT 105 DUE TO 106 AND 107 BEING OCCUPIED.
12	13/11/2023	QUBE	DREAM JASMINE	V2374	NIGHT	106	N	B BLOCK, C BLOCK, D BLOCK AND N BLOCK	Y	Y		C BLOCK UTILISED AS NOT ENOUGH SPACE IN H, F, D OR B BLOCKS
13	13/11/2023	QUBE	GLOVIS CAPTAIN	109	EVENING	107	Y	A BLOCK AND C BLOCK	Y	Y		
14	15/11/2023	QUBE	MORNING PILOT	EF317	EVENING	107	N	107CON, EBLK1, A BLOCK, C BLOCK, O BLOCK, Q BLOCK AND ESHED	Y	Y		
15	16/11/2023	QUBE	JASPER ARROW	129	DAY	106	N	D BLOCK, F BLOCK, H BLOCK, R BLOCK, ALCOVE, PSBED AND N BLOCK	Y	Y		
16	17/11/2023	QUBE	VIKING QUEEN	2	DAY	105	N	B BLOCK, D BLOCK, H BLOCK AND N BLOCK	Y	Y		
17	17/11/2023	QUBE	HOEGH TOKYO	107	EVENING	107	N	107CON, I BLOCK, A BLOCK, O BLOCK, Q BLOCK, ESHED, GSHED AND LINKSPAN	Y	Y		
18	19/11/2023	LINX	AAL BANGKOK	23009	EVENING	105	N	N BLOCK AND P SHED	Y	Y		VESSEL BERTHED AT 105 DUE TO 106 AND 107 BEING OCCUPIED.
19	21/11/2023	QUBE	LIBORG	1	NIGHT	106	Y	P SHED	Y	Y		
20	23/11/2023	QUBE	IRIS ACE	79	NIGHT	107	N	107CON, C BLOCK, O BLOCK AND Q BLOCK	Y	Y		
21	23/11/2023	QUBE	PACIFIC ENDEAVOUR	2310W	EVENING	105	N	M BLOCK	Y	Y		VESSEL BERTHED AT 105 DUE TO 106 AND 107 BEING OCCUPIED.
22	23/11/2023	QUBE	DON JUAN	V2374	EVENING	106	N	F BLOCK, H BLOCK, I BLOCK, L BLOCK AND PSBED	Y	Y		
23	25/11/2023	QUBE	TUGELA	EF222	DAY	107	N	107CON, GBLK1, I BLOCK, C BLOCK, Q BLOCK AND ESHED	Y	Y		
24	26/11/2023	QUBE	KEN TOKU	2301	DAY	106	N	GSHED AND L BLOCK	Y	Y		
25	26/11/2023	QUBE	MORNING PRIDE	EF318	EVENING	107	Y	107STR, I BLOCK, A BLOCK, C BLOCK, D BLOCK, O BLOCK, Q BLOCK, ESHED AND LINKSPAN	Y	Y		
26	27/11/2023	LINX	GRAND QUEST	23GQ03	EVENING	105	N	F BLOCK, H BLOCK AND R BLOCK	Y	Y		VESSEL BERTHED AT 105 DUE TO 106 AND 107 BEING OCCUPIED.
27	27/11/2023	QUBE	TRANS FUTURE 5	150	EVENING	107	Y	A BLOCK, B BLOCK, D BLOCK AND Q BLOCK	Y	Y		B BLOCK AND D BLOCK UTILISED AS NOT ENOUGH SPACE IN A OR C BLOCKS
28	29/11/2023	LINX	SAGA PIONEER	54SZ	EVENING	107	Y	E SHED	Y	Y		

Legend - Berth # and Laydown

	Primary
	Secondary
	Tertiary

	LINX	QUBE
TOTAL VESSELS FOR MONTH	5	23
GREEN BERTH	3	20
ORANGE BERTH	2	3
RED BERTH	0	0
GREEN LAYDOWN	5	18
ORANGE LAYDOWN	0	5
RED LAYDOWN	0	0

	LINX	QUBE
NUMBER OF BERTHING DELAYS	1	6
NUMBER OF MACHINERY ISSUES/REQUESTS NOT MET		

SEE ATTACHED SHEETS SHOWING BERTH AND CONGESTION DELAYS

VESSEL ETA'S									
NAME	ETA DATE	ETA TIME	POB	ETD	BERTH	BSD - TREATMENT	PREVIOUS PORT	VOLUME	WINDOW
FIDELIO	31/10/2023	6:00	1/11/2023 17:39	3/11/2023 16:58	107			668	
MORNING CELLO	3/11/2023	10:00	3/11/2023 19:05	4/11/2023 18:53	107			1861	
MAASGRACHT	3/11/2023	18:00	3/11/2023 23:29	8/11/2023 18:12	106				STEEL BEAMS
HOIHOW	4/11/2023	8:00	7/11/2023 2:13	7/11/2023 21:44	107				CHINA STEEL
CAPETOWN HIGHWAY	5/11/2023	7:51	5/11/2023 9:18	7/11/2023 0:01	107			2632	
GRANDE NEW JERSEY	5/11/2023	20:42	5/11/2023 22:23	7/11/2023 15:43	105			1572	
AAL KEMBLA	9/11/2023	14:00	9/11/2023 16:15	12/11/2003 20:12	106				STEEL
WALRUS ACE	9/11/2023	14:00	9/11/2023 14:54	10/11/2023 18:54	105			2245	FAILED INITIAL FOGGING AND DE
ARTEMIS LEADER	11/11/2023	3:00	11/11/2023 4:05	13/11/2023 7:55	107			1922	
DESTINY	11/11/2023	19:00	11/11/2023 20:13	14/11/2023 3:51	103				8,000T SSP
SALVIA ACE	11/11/2023	18:00	12/11/2023 8:10	12/11/2023 23:58	105			1250	
DREAM JASMINE	12/11/2023	5:00	12/11/2023 22:05	14/11/2023 2:57	106			1793	
GLOVIS CAPTAIN	12/11/2023	7:00	13/11/2023 17:03	14/11/2023 6:12	107			950	
MORNING PILOT	15/11/2023	17:00	15/11/2023 18:17	16/11/2023 22:04	107			1016	
WALRUS ACE	16/11/2023	6:00	17/11/2023 7:02	18/11/2023 22:43	103			2245	RETURNING TO BERTH FOR TREA
JASPER ARROW	16/11/2023	6:30	16/11/2023 8:00	20/11/2023 23:23	106			1348	STINK BUGS FOUND ON BOARD -
VIKING QUEEN	16/11/2023	15:00	17/11/2023 2:00	17/11/2023 18:07	105			1220	MOL DECISION UNTIL A BERTH IS
HOEGH TOKYO	17/11/2023	9:00	17/11/2023 10:20	18/11/2023 20:55	107			1274	
WALRUS ACE	16/11/2023	6:00	18/11/2023 22:43	21/11/2023 0:20	107			2245	PASSED INSPECTION - MOVED TO
AAL BANGKOK	19/11/2023	12:00	19/11/2023 13:11	22/11/2023 15:12	105				TRAINS
LJBORG	19/11/2023	16:00	21/11/2023 3:10	22/11/2023 13:00	107				
IRIS ACE	21/11/2023	13:00	21/11/2023 13:37	22/11/2023 16:50	103			1589	REQUIRES FOGGING - FIRST PORT
IRIS ACE	21/11/2023	13:00	22/11/2023 16:50	24/11/2023 3:59	107			1589	PASSED INSPECTION - MOVED TO
PACIFIC ENDEAVOUR	23/11/2023	12:00	23/11/2023 12:59	27/11/2023 10:52	105				
DON JUAN	23/11/2023	17:00	23/11/2023 16:01	24/11/2023 7:05	106			697	
TUGELA	25/11/2023	11:00	25/11/2023 12:25	26/11/2023 17:06	107			358	
MORNING PRIDE	25/11/2023	11:00	26/11/2023 18:57	28/11/2023 1:59	107			1825	NEEDS TO BERTH AT 107 - WWL P
KEN TOKU	25/11/2023	20:00	25/11/2023 19:08	3/12/2023 16:32	106				CHINA STEEL
TRANS FUTURE 5	27/11/2023	4:12	28/11/2023 4:01	29/11/2023 17:52	107			2755	DISCHARGED CEASED AT 2300HR
GRAND QUEST	27/11/2023	10:00	27/11/2023 12:36	29/11/2023 0:37	105			1467	
TRANS FUTURE 5	27/11/2023	4:12	29/11/2023 0:37	4/12/2023 15:49	103			2755	MOVED TO 103 FOR TREATMENT
SAGA PIONEER	28/11/2023	2:54	29/11/2023 19:31	2/12/2023 4:00	107				8,300T PULP

PARTED FOR ANCHORAGE

**TMENT AND INPSECTION
DISCHARGE CEASED, ALL CARGO HELD
AVAILABLE (DUE TO THE WALRUS ACE)**

107 TO START DISCHARGE

**OF CALL - BERTHING AT 103 FOR TREATMEN
107 TO DISCHARGE**

PRIORITISED TUGELA

S DUE TO LIVE BMSB FOUND ON BOARD

AND INSPECTION

NUMBER	DATE	STEVE-DORE	VESSEL	VOYAGE	STARTING SHIFT	BERTH #	BERTH DELAY	LAYDOWN	MACHINERY REQUEST RECEIVED	MACHINERY REQUEST FILLED	MACHINERY ISSUES	NOTES
1	2/12/2023	QUBE	VIKING PASSAMA	V2316	NIGHT	105	N	H BLOCK, GEARSTORE AND N BLOCK	Y	Y		VESSEL BERTHED AT 105 DUE TO 106 AND 107 BEING OCCUPIED.
2	5/12/2023	QUBE	GLOBAL VISION	63	EVENING	103	N	DIRECT TO TRUCK	Y	Y		
3	5/12/2023	QUBE	BELUGA ACE	48	EVENING	107	N	C BLOCK AND O BLOCK	Y	Y		
4	6/12/2023	QUBE	EIDVAAG OMEGA	0025	DAY	106	N	DIRECT TO TRUCK	Y	Y		
5	8/12/2023	QUBE	TRANS FUTURE 7	148	DAY	107	N	107CON,A BLOCK,C BLOCK,O BLOCK, Q BLOCK AND GSHED	Y	Y		
6	8/12/2023	QUBE	POLARIS HIGHWAY	74	EVENING	105	Y	B BLOCK,D BLOCK, N BLOCK AND GEARSTORE	Y	Y		VESSEL BERTHED AT 105 DUE TO 106 AND 107 BEING OCCUPIED. H BLOCK NOT UTILISED AS NOT ENOUGH SPACE
7	8/12/2023	QUBE	SHANGHAI HIGHWAY	169	EVENING	106	N	F BLOCK, H BLOCK, I BLOCK AND PSHEd	Y	Y		
8	9/12/2023	QUBE	VIKING PAGLIA	V2375	DAY	105	Y	B BLOCK,D BLOCK,F BLOCK, H BLOCK, R BLOCK, GEARSTORE AND N BLOCK	Y	Y		VESSEL BERTHED AT 105 DUE TO 106 AND 107 BEING OCCUPIED.
9	12/12/2023	QUBE	PAGNA	24	NIGHT	106	N	B BLOCK, D BLOCK,F BLOCK AND L BLOCK	Y	Y		
10	15/12/2023	QUBE	MORNING CRYSTAL	MCRV2376	NIGHT	107	N	GBLK1, C BLOCK, Q BLOCK AND ESHED	Y	Y		H BLOCK NOT UTILISED AS NOT ENOUGH SPACE
11	17/12/2023	QUBE	AFRICAN CORMORANT	23152	DAY	103	N	DIRECT TO TRUCK	Y	Y		
12	18/12/2023	QUBE	MERWEDEGRACHT	2311	DAY	105	N	DIRECT TO TRUCK	Y	Y		
13	18/12/2023	QUBE	GLOVIS CLIPPER	31	DAY	106	N	B BLOCK, D BLOCK,F BLOCK,H BLOCK, R BLOCK AND ALCOVE	Y	Y		
14	18/12/2023	QUBE	TULANE	EF320	DAY	107	N	107CON, EBLK1, 107STRG, GBLK1,C BLOCK,O BLOCK, ESHED AND I BLOCK	Y	Y		
15	19/12/2023	LINX	ARTEMIS LEADER	121	EVENING	106	N	B BLOCK, D BLOCK, F BLOCK,H BLOCK, I BLOCK AND M BLOCK	Y	Y		
16	20/12/2023	QUBE	WISTERIA ACE	126	EVENING	107	N	GBLK1,A BLOCK AND Q BLOCK	Y	Y		
17	21/12/2023	LINX	DELPHINUS LEADER	45	DAY	107	N	A BLOCK AND Q BLOCK	Y	Y		
18	23/12/2023	LINX	CRUX LEADER	1	DAY	106	N	B BLOCK, C BLOCK,D BLOCK, F BLOCK,H BLOCK, PSHEd AND N BLOCK	Y	Y		C BLOCK UTILISED AS NOT ENOUGH SPACE IN B,D,F,H BLOCKS
19	23/12/2023	LINX	HOEGH TRAVELLER	42	DAY	107	N	107CON, EBLK1, A BLOCK, C BLOCK, O BLOCK,Q BLOCK AND ESHED	Y	Y		
20	24/12/2023	LINX	HOEGH JACKSONVILLE	58	DAY	106	N	B BLOCK,D BLOCK,H BLOCK,L BLOCK, M BLOCK AND PSHEd	Y	Y		
21	26/12/2023	QUBE	PACIFIC ENDEAVOUR	2311W	EVENING	105	N	M BLOCK	Y	Y		
22	27/12/2023	QUBE	PAGANELLA	V2317	DAY	107	N	107CON, EBLK1, A BLOCK, C BLOCK,O BLOCK,Q BLOCK AND ESHED	Y	Y		
23	28/12/2023	LINX	MODERN LINK	121	EVENING	107	Y	A BLOCK, O BLOCK, Q BLOCK AND ESHED	Y	Y		
24	29/12/2023	QUBE	WALRUS ACE	41	DAY	105	N	F BLOCK, H BLOCK, N BLOCK AND GEARSTORE	Y	Y		VESSEL BERTHED AT 105 DUE TO 106 AND 107 BEING OCCUPIED. B BLOCK AND D BLOCK UTILISED AS NOT ENOUGH SPACE IN A OR C BLOCKS
25	29/12/2023	QUBE	GRAND AURORA	0001A	EVENING	107	N	A BLOCK,B BLOCK,C BLOCK,D BLOCK, O BLOCK AND Q BLOCK	Y	Y		

Legend - Berth # and Laydown

	Primary
	Secondary
	Tertiary

	LINX	QUBE
TOTAL VESSELS FOR MONTH	6	19
GREEN BERTH	6	15
ORANGE BERTH	0	4
RED BERTH	0	0
GREEN LAYDOWN	5	16
ORANGE LAYDOWN	1	3
RED LAYDOWN	0	0

NUMBER OF BERTHING DELAYS 1
NUMBER OF MACHINERY ISSUES/REQUESTS NOT MET 1

SEE ATTACHED SHEETS SHOWING BERTH AND CONGESTION DELAYS

VESSEL ETA'S										
NAME	ETA DATE	ETA TIME	POB	ETD	BERTH	BSD - TREATMENT	PREVIOUS PORT	VOLUME	WINDOW	
VIKING PASSAMA	8/12/2023	AM	1/12/2023 20:55	3/12/2023 15:35	105			100		REQUIRES AN INSPECTION ON AR
TRANS FUTURE 5	27/11/2023	4:12	4/12/2023 15:49	6/12/2023 3:54	105			2755		
BELUGA ACE	5/12/2023	14:00	5/12/2023 14:17	6/12/2023 1:00	107			643		
GLOBAL VISION	5/12/2023	13:00	5/12/2023 10:15	13/12/2023 16:14	103					38,500T CLINKER
EIDSVAGG OMEGA	6/12/2023	8:00	6/12/2023 8:43	8/12/2023 3:24	106					LOAD GLUTEN
VIKING PAGLIA	8/12/2023	8:00	9/12/2023 3:47	11/12/2023 1:01	105			310		REQUIRES AN INSPECTION ON AR
TRANS FUTURE 7	8/12/2023	10:00	8/12/2023 13:04	10/12/2023 17:59	107			2336		
POLARIS HIGHWAY	8/12/2023	13:30	8/12/2023 14:43	9/12/2023 1:56	105			509		REQUIRED TO VACATE BERTH AS
SHANGHAI HIGHWAY	8/12/2023	19:00	8/12/2023 19:52	12/12/2023 11:12	106			914		
POLARIS HIGHWAY	8/12/2023	13:30	11/12/2023 17:45	13/12/2023 17:15	105			509		VESSEL BERTHED AT 105 TO DISCI
PAGNA	12/12/2023	17:00	12/12/2023 19:34	15/12/2023 14:58	106			2482		INSECTS FOUND ONBOARD IN TO
MORNING CRYSTAL	15/12/2023	1:00	15/12/2023 2:23	16/12/2023 9:24	107			854		
AFRICAN CORMORANT	17/12/2023	3:48	17/12/2023 5:11	26/12/2023 14:58	103					9,000T SODA ASH
MERWEDEGRACHT	18/12/2023	8:00	18/12/2023 8:05	21/12/2023 8:00	105					POWER HOUSE MUSEUM
TULANE	18/12/2023	5:00	18/12/2023 4:35	20/12/2023 16:44	107			816		
GLOVIS CLIPPER	18/12/2023	10:00	18/12/2023 16:15	19/12/2023 21:30	106			2103	BNE	
ARTEMIS LEADER	19/12/2023	18:30	19/12/2023 23:39	23/12/2023 0:05	106			3710	DWN	
WISTERIA ACE	20/12/2023	5:30	20/12/2023 18:59	21/12/2023 4:06	107			647	TSV	
DELPHINUS LEADER	21/12/2023	4:45	21/12/2023 5:52	21/12/2023 19:54	107			847	BNE	
CRUX LEADER	23/12/2023	4:30	23/12/2023 5:59	24/12/2023 3:10	106			1244	BNE	
HOEGH TRAVELLER	23/12/2023	6:00	23/12/2023 7:05	27/12/2023 2:01	107			2548	MEL	
HOEGH JACKSONVILLE	24/12/2023	3:00	24/12/2023 5:13	28/12/2023 10:54	106			1029	MEL	
PACIFIC ENDEAVOUR	26/12/2023	21:00	26/12/2023 21:57	28/12/2023 7:31	105				MEL	
PAGNELLA	26/12/2023	23:59	27/12/2023 3:53	28/12/2023 4:58	107			356	AKL	
MODERN LINK	26/12/2023	18:00	28/12/2023 14:51	29/12/2023 8:00	107			396	YOK	DIRECT CALL
WALRUS ACE	29/12/2023	6:00	29/12/2023 4:57	3/01/2024 15:55	105			2599	YOK	REQUIRES FOGGING
GRAND AURORA	29/12/2023	16:00	29/12/2023 16:59	30/12/2023 22:54	107			2401	BNE	INSECTS FOUND ONBOARD IN BN

ARRIVAL

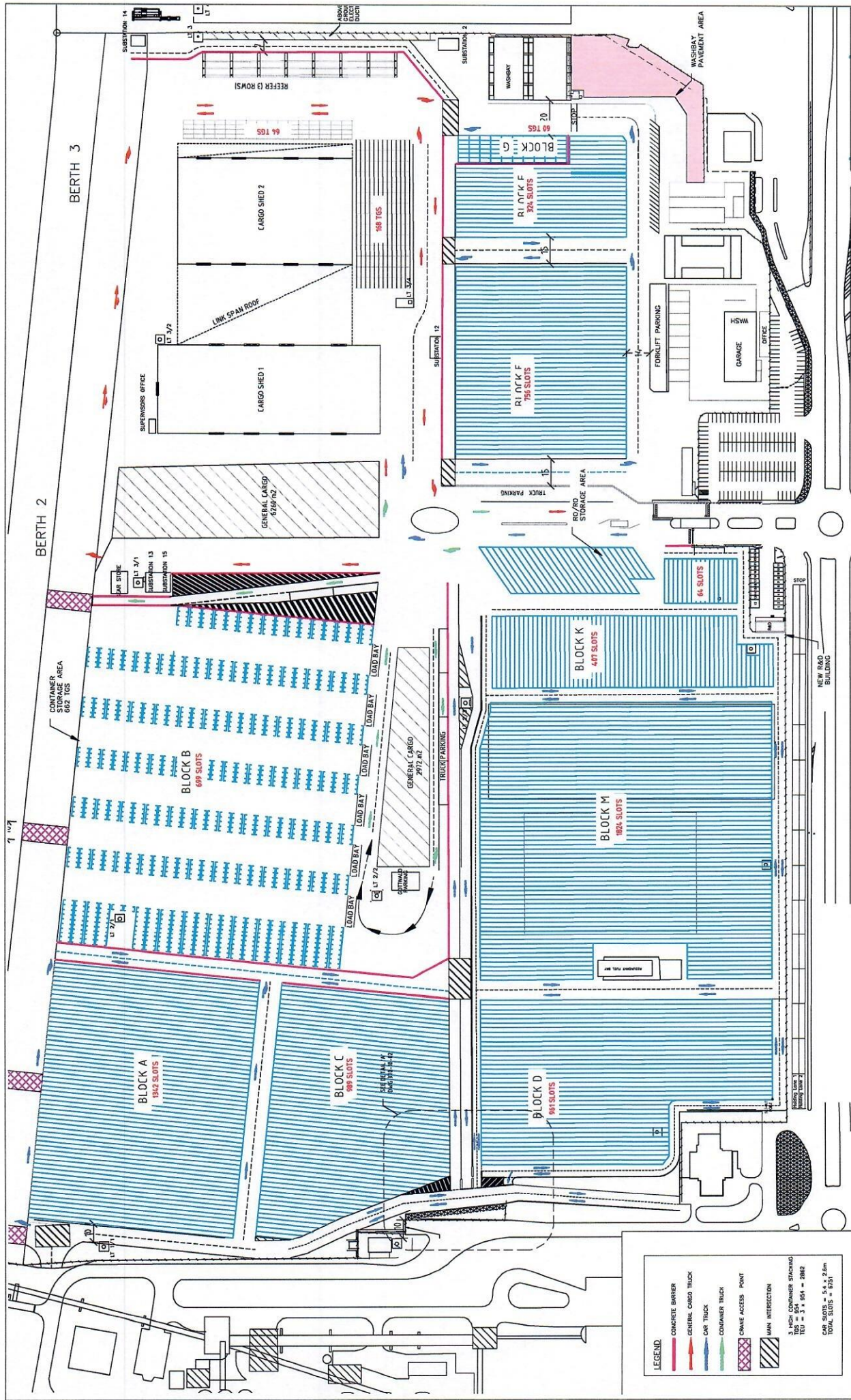
ARRIVAL

BUGS ONBOARD

CHARGE HONDA AND LOAD IGM FF
WNSVILLE - INSPECTION OF CARG

IE

PART B – TERMINAL LAYOUT FISHERMAN ISLANDS AND PORT KEMBLA



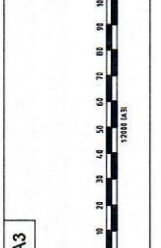
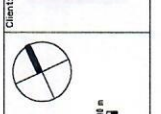
LEGEND

- CONCRETE BARRIER
- GENERAL CARGO TRUCK
- CAR TRUCK
- CONTAINER TRUCK
- CONCRETE ACCESS POINT
- MAIN INTERSECTION

3 HIGH CONTAINER STACKING
 100' = 84' 84' = 2882
 100' = 84' 84' = 2882
 TOTAL SLOTS = 8731

Project
 AAT FISHERMAN ISLANDS TERMINAL
Terminal Layout
Drawing Title
 C1 - LINEMARKING WORKS
 GENERAL ARRANGEMENT
 STAGE 1 ERE INFORMATION
 Project No. 270
 Drawing No. B
 © James Rose Consulting

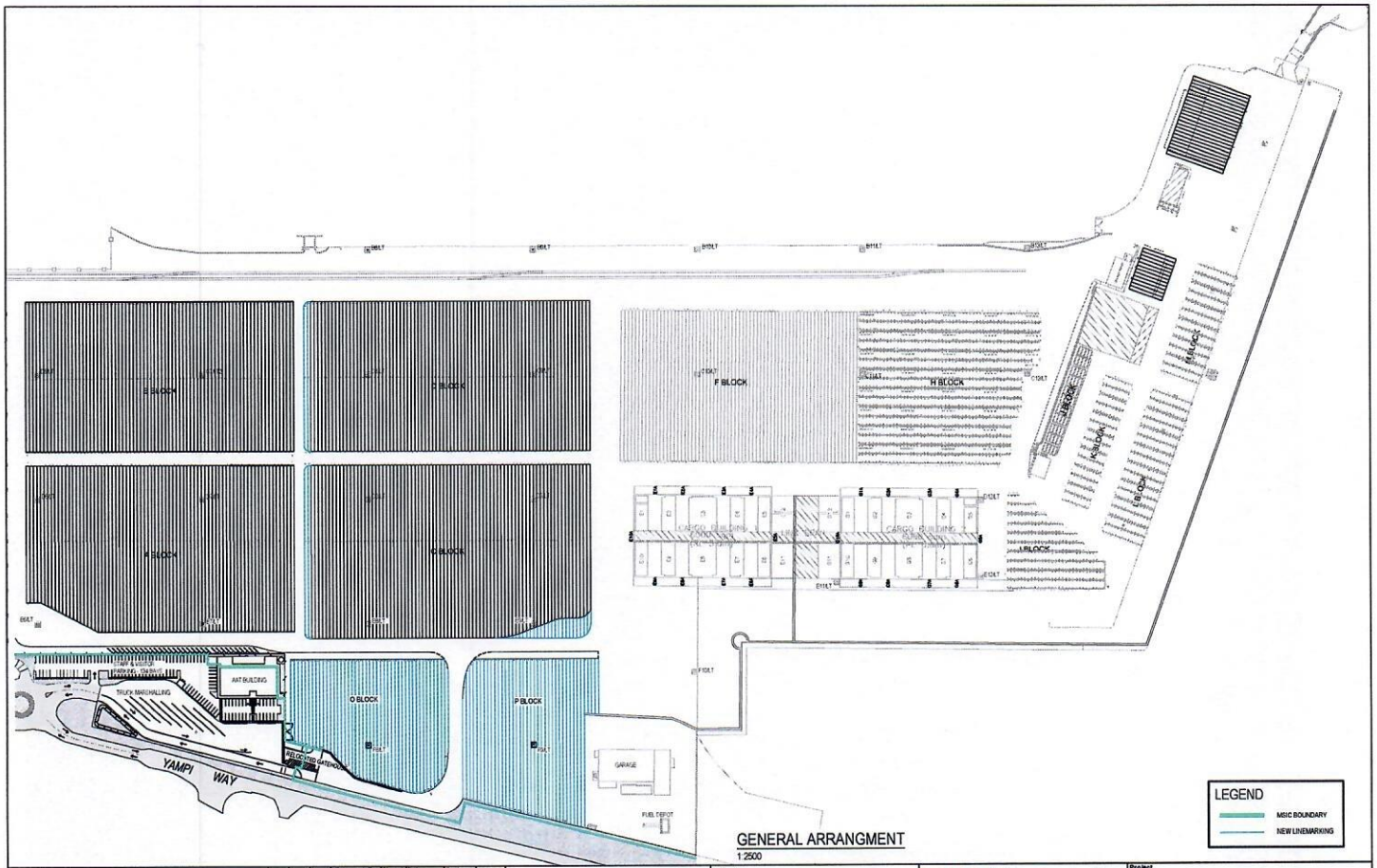
James Rose Consulting
 ABRN 64 175 064 811
 Unit F21, 1-16 Barr Street
 Brisbane QLD 4001
 PH: 07 3655 8559
 FAX: 07 3655 8559
 m.jr@jamesrose.com.au
 www.jamesrose.com.au



Client:	A3
Scale:	1:2000
Prepared By:	PL
Verified By:	DN
Approved By:	DN
Date:	04/05/19
Date:	04/05/19
Date:	04/05/19
Horizontal Datum:	
Vertical Datum:	

04/05/19	DM	DM		
20/05/19	PL	DN	BY	Ver. App.
REV	DATE	REVISIONS AND ISSUES		

BLOCK B AMENDED
 FOR INFORMATION



B 31/10/10 REVISION FOR CLIENT COMMENTS A 16/10/10 DRAFT FOR CLIENT REVIEW		PL DM DM DM PL DM DM DM	Prepared By PL DM DM DM Verified By DM DM DM DM Approved By DM DM DM DM	Signed Date 31/10/10 31/10/10 31/10/10	Scale 1:2500 A3		Client: Australian Amalgamated Terminals	James Rose Consulting ABN 64 175 064 511 Unit F21, 1-15 Barr Street SALAMAN NSW 2041 PH 02 9555 8568 FAX 02 9555 8599 mail@jamesrose.com.au www.jamesrose.com.au	Project AAT PORT KEMBLA TERMINAL REDEVELOPMENT Drawing Title GENERAL ARRANGEMENT
REV DATE REVISION DETAILS REVISIONS AND ISSUES		BY VER. APP. Vertical Datum AND	Horizontal Datum N/A	Scale 0 25.0 50.0 75.0 100.0 125.0 m 1:2500 (A3)	Status: DRAFT Project No.: 433 Drawing No.: 433-C-01 Rev.: 8				

PART C: TERMINAL USERS IN WHICH QUBE OR A QUBE RELATED ENTITY HAS AN INTEREST

Qube or a Qube Related Entity has a direct or indirect interest greater than or equal to 20% in the following Terminal Users who provided Stevedoring Services or PDI Operator Services at the following Terminals during the period covered by this Compliance Report:

Port Kembla Terminal

Qube Ports Pty Ltd ACN 123 021 492

Prixcar Services Pty Ltd ACN 007 063 505

Brisbane Terminal

Qube Ports Pty Ltd ACN 123 021 492

Prixcar Services Pty Ltd ACN 007 063 505